



Test Report

Report No. A2230273068101025

Page 1 of 26

Company Name NANTONG HORNBY ELECTRONIC CO.,LTD./SMARTENGRAND LTD.
shown on Report
Address NO.8,XING YUAN ROAD,INDUSTRY PARK RUCHENG TOWN,RUGAO,JIANGSU/
NO.168,SEC.2,ZHONGZHENG ROAD,SANXIA DISTRICT,NEW TAIPEI CITY,
TAIWAN,CHINA

Sample Received Date Jun. 7, 2023
Testing Period Jun. 7, 2023 to Jun. 12, 2023

Test Requested As specified by client, to test Lead (Pb), Cadmium (Cd), Mercury (Hg), Hexavalent Chromium (Cr(VI)), Polybrominated Biphenyls (PBBs), Polybrominated Diphenyl Ethers (PBDEs), Phthalates, Beryllium(Be), Antimony(Sb), Phosphorus(P), Hexabromocyclododecane (HBCDD), Fluorine (F), Chlorine (Cl), Bromine (Br), Iodine (I), Middle Chain Chlorinated Paraffins (MCCPs), Perfluorooctane Sulfonates(PFOS), Perfluorooctanoic Acid(PFOA) in the submitted sample(s).

Test Method/Test Result(s) Please refer to the following page(s).

Conclusion

Tested Sample	According to standard/directive	Result
Submitted Sample	RoHS Directive 2011/65/EU with amendment (EU) 2015/863	PASS

PASS means that the results shown on the report comply with the limits set by RoHS Directive 2011/65/EU with amendment (EU) 2015/863.

Approved by 
Chen kaimin
Lab Manager

Date Jun. 16, 2023

Centre Testing International Pinbiao(Shanghai) Co., Ltd.

No. R475312008
No.1351, Wanfang Road, Minhang District, Shanghai, China



Test Report

Report No. A2230273068101025

Page 2 of 26

The following sample(s) and sample information was/were submitted and identified by/on the behalf of the applicant

CTI Sample ID	Sample Name(s)	Used for	Reference Report No. - CTI Sample ID
001	WAFER	<p>DIODE & BRIDGE RECTIFIERS(R-1, A-405(H), DO-41, DO-15, R-3, DO-201AD, R-6, R-7, MT09E, MT09ES, FT, JA005,GBP, GBL, GBU, GBJ, KBL, KBP, KBU, KBJ, JA, JB, 2S, D3K, TSB-5, S25VB10, SKBPC, 2CL, CL, MD-M, MD-S, MD-F, DB-1, DB-S, DF, DF-S, LBF, ABS, MSBS, YBS, YBSL, SBS, SBSL, LDF, MBF(S/T1/T2), UMB-F, MSBL, TTF, WOM/RC-2, MKBPC, MKBPC-W, KBPC-1, KBPC-6, KBPC-8, KBPC, KBPC-W, MP, MP8, MBR, MBR-W, BR, BR-W, BR-L, BR-6, BR-8, RA/RAS, CXA, TO-220AC, TO-220AB, ITO-220AC, ITO-220AB, TO-3P, TO-247(A/AD/S), SMA-X, DO-214AC/SMA, SMA-F, SMA-L, SMA-S, SMA-HE, SMA-T, DO-214AA/SMB, SMB-F, SMB-S, SMB-L, DO-214AB/SMC, SMC-F, SMC-T3, SMC-T4, SMC-HE, DO-218(AB) , MINI-MELF, MELF, TO-92, TO-126, TO-252(A), TO252-4L, TO-251, TO-262, D-PAK, TO-263, D2PAK, SOD-123(FL/T/S/H1/HT/HE), 1206(S), SOD-323(FL/T/HE), 0805, SOD-523(FL), 0603, SOD-723(FL), SOD-923(FL), SOD-882, 0402, 0201, SOT-23(-3/-3L/-3S/-5/-6/-6L), SOT-26, SOT-343, SOT-353, SOT-553, SOT-363, SOT-563, SOT-223, SOT-323(F), SOT-523(F), SOT-723(F), SOT-883, DFN1006-3L, 2928-8L, CP, SOT-143, TO-277(A), WBFBP, DFN1006-2, DFN1006-3, DFN0603, DSON10, DFN2510(-10L), DFN2010, DFN1608, DFN1610, DFN1308, DFN3810(-9L), DFN5515(-18L), DFN1515-6L, DFN1515-6L, DFN2020-6L, DFN1610-6L, DFN1713-8L, DFN2010-8L, TO-89, SOP-8, MSOP-8, TSOP-6, TSSOP-8, MSOP-10, DFN2626-10L, DFN3020-10L, DFN4120-10L, DFN3316-16, LDFN4016-16L, PPAK2X3, PPAK3X3, DFN2X2-3L, DFN3X3(-8L), DFN2X2-6, DFN2X3-6, DFN2X3-8, PPAK5X6, DFN5X6-8L)</p>	A2230273068101001
002	GPP Wafer	<p>DIODE / BRIDGE / TRIAC / SCR (R-1, A-405(H), DO-41, DO-15, R-3, DO-201(AD), R-6, R-7, MT09E, MT09ES, FT, JA005,TO-92, TO-126, GBP, GBL, GBU, GBJ, KBL, KBP, KBU, KBJ, JA, JB, 2S, D3K, TSB-5, S25VB10, SKBPC, 2CL, CL, MD-M, MD-S, MD-F, DB-1, DB-S, DF, DF-S, LBF, ABS, MSBS, YBS, YBSL, SBS, SBSL, SHBS, LDF, MBF(S/T1/T2), UMB-F, MSBL, TTF, WOM/RC-2, MKBPC, MKBPC-W, KBPC-1, KBPC-6, KBPC-8, KBPC, KBPC-W, MP, MP8, MBR, MBR-W, BR, BR-W, BR-L, BR-6, BR-8, RA/RAS, CXA, TO-220AC, TO-220AB, ITO-220AC, ITO-220AB, TO-3P, TO-247(A/AD/S), SMA-X, DO-214AC/SMA, SMA-F, SMA-L, SMA-S, SMA-HE, SMA-T, DO-214AA/SMB, SMB-F, SMB-S, SMB-L, DO-214AB/SMC, SMC-F, SMC-T3, SMC-T4, SMC-HE, DO-218(AB) , MINI-MELF, TO-252(A), TO252-4L, TO-251, TO-262, D-PAK, TO-263, D2PAK, SOT-89, SOD-123(FL/T/S/H1/HT/HE), SOD-323(FL/T/HE), CP, TO-277(A))</p>	A2230273068101002

Test Report

Report No. A2230273068101025

Page 3 of 26

CTI Sample ID	Sample Name(s)	Used for	Reference Report No. - CTI Sample ID
003	Copper Wire	DIODE & BRIDGE RECTIFIERS(R-1, A-405(H), DO-41, DO-15, R-3, DO-201AD, R-6, R-7, GBP, GBL, GBU, GBJ, KBL, KBP, KBU, KBJ, JA, JB, 2S, D3K, TSB-5, S25VB10, SKBPC, 2CL, CL, MD-M, MD-S, MD-F, DB-1, DB-S, DF, DF-S, LBF, ABS, MSBS, YBS, YBSL, SBS, SBSL, LDF, MBF(S/T1/T2), UMB-F, MSBL, TTF, WOM/RC-2, MKBPC, MKBPC-W, KBPC-1, KBPC-6, KBPC-8, KBPC, KBPC-W, MP, MP8, MBR, MBR-W, BR, BR-W, BR-L, BR-6, BR-8, RA/RAS, CXA, TO-220AC, TO-220AB, ITO-220AC, ITO-220AB, TO-3P, TO-247(A/AD/S), SMA-X, DO-214AC/SMA, SMA-F, SMA-L, SMA-S, SMA-HE, SMA-T, DO-214AA/SMB, SMB-F, SMB-S, SMB-L, DO-214AB/SMC, SMC-F, SMC-T3, SMC-T4, SMC-HE, DO-218(AB) , MINI-MELF, MELF, TO-92, TO-126, TO-252(A), TO252-4L, TO-251, TO-262, D-PAK, TO-263, D2PAK, SOD-123(FL/T/S/H1/HT/HE), 1206(S), SOD-323(FL/T/HE), 0805, SOD-523(FL), 0603, SOD-723(FL), SOD-923(FL), SOD-882, 0402, 0201, SOT-23(-3/-3L/-3S/-5/-6/-6L), SOT-26, SOT-343, SOT-353, SOT-553, SOT-363, SOT-563, SOT-223, SOT-323(F), SOT-523(F), SOT-723(F), SOT-883, DFN1006-3L, 2928-8L, CP, SOT-143, TO-277(A), WBFBP, DFN1006-2, DFN1006-3, DFN0603, DSON10, DFN2510(-10L), DFN2010, DFN1608, DFN1610, DFN1308, DFN3810(-9L), DFN5515(-18L), DFN1515-6L, DFN1515-6L, DFN2020-6L, DFN1610-6L, DFN1713-8L, DFN2010-8L, TO-89, SOP-8, MSOP-8, TSOP-6, TSSOP-8, MSOP-10, DFN2626-10L, DFN3020-10L, DFN4120-10L, DFN3316-16, LDFN4016-16L, PPAK2X3, PPAK3X3, DFN2X2-3L, DFN3X3(-8L), DFN2X2-6, DFN2X3-6, DFN2X3-8, PPAK5X6, DFN5X6-8L)	A2230273068101003

Test Report

Report No. A2230273068101025

Page 4 of 26

CTI Sample ID	Sample Name(s)	Used for	Reference Report No. - CTI Sample ID
004	Lead frame	DIODE & BRIDGE RECTIFIERS(R-1, A-405(H), DO-41, DO-15, R-3, DO-201AD, R-6, R-7, MT09E, MT09ES, FT, JA005,GBP, GBL, GBU, GBJ, KBL, KBP, KBU, KBJ, JA, JB, 2S, D3K, TSB-5, S25VB10, SKBPC, 2CL, CL, MD-M, MD-S, MD-F, DB-1, DB-S, DF, DF-S, LBF, ABS, MSBS, YBS, YBSL, SBS, SBSL, LDF, MBF(S/T1/T2), UMB-F, MSBL, TTF, WOM/RC-2, MKBPC, MKBPC-W, KBPC-1, KBPC-6, KBPC-8, KBPC, KBPC-W, MP, MP8, MBR, MBR-W, BR, BR-W, BR-L, BR-6, BR-8, RA/RAS, CXA, TO-220AC, TO-220AB, ITO-220AC, ITO-220AB, TO-3P, TO-247(A/AD/S), SMA-X, DO-214AC/SMA, SMA-F, SMA-L, SMA-S, SMA-HE, SMA-T, DO-214AA/SMB, SMB-F, SMB-S, SMB-L, DO-214AB/SMC, SMC-F, SMC-T3, SMC-T4, SMC-HE, DO-218(AB) , MINI-MELF, MELF, TO-92, TO-126, TO-252(A), TO252-4L, TO-251, TO-262, D-PAK, TO-263, D2PAK, SOD-123(FL/T/S/H1/HT/HE), 1206(S), SOD-323(FL/T/HE), 0805, SOD-523(FL), 0603, SOD-723(FL), SOD-923(FL), SOD-882, 0402, 0201, SOT-23(-3/-3L/-3S/-5/-6/-6L), SOT-26, SOT-343, SOT-353, SOT-553, SOT-363, SOT-563, SOT-223, SOT-323(F), SOT-523(F), SOT-723(F), SOT-883, DFN1006-3L, 2928-8L, CP, SOT-143, TO-277(A), WBFBP, DFN1006-2, DFN1006-3, DFN0603, DSON10, DFN2510(-10L), DFN2010, DFN1608, DFN1610, DFN1308, DFN3810(-9L), DFN5515(-18L), DFN1515-6L, DFN1515-6L, DFN2020-6L, DFN1610-6L, DFN1713-8L, DFN2010-8L, TO-89, SOP-8, MSOP-8, TSOP-6, TSSOP-8, MSOP-10, DFN2626-10L, DFN3020-10L, DFN4120-10L, DFN3316-16, LDFN4016-16L, PPAK2X3, PPAK3X3, DFN2X2-3L, DFN3X3(-8L), DFN2X2-6, DFN2X3-6, DFN2X3-8, PPAK5X6, DFN5X6-8L)	A2230273068101004

Test Report

Report No. A2230273068101025

Page 5 of 26

CTI Sample ID	Sample Name(s)	Used for	Reference Report No. - CTI Sample ID
005	Epoxy Molding Compound	DIODE & BRIDGE RECTIFIERS(R-1, A-405(H), DO-41, DO-15, R-3, DO-201AD, R-6, R-7, MT09E, MT09ES, FT, GBP, GBL, GBU, GBJ, KBL, KBP, KBU, KBJ, JA, JB, 2S, D3K, TSB-5, S25VB10, SKBPC, 2CL, CL, MD-M, MD-S, MD-F, DB-1, DB-S, DF, DF-S, LBF, ABS, MSBS, YBS, YBSL, SBS, SBSL, LDF, MBF(S/T1/T2), UMB-F, MSBL, TTF, WOM/RC-2, MKBPC, MKBPC-W, KBPC-1, KBPC-6, KBPC-8, KBPC, KBPC-W, MP, MP8, MBR, MBR-W, BR, BR-W, BR-L, BR-6, BR-8, RA/RAS, CXA, TO-220AC, TO-220AB, ITO-220AC, ITO-220AB, TO-3P, TO-247(A/AD/S), SMA-X, DO-214AC/SMA, SMA-F, SMA-L, SMA-S, SMA-HE, SMA-T, DO-214AA/SMB, SMB-F, SMB-S, SMB-L, DO-214AB/SMC, SMC-F, SMC-T3, SMC-T4, SMC-HE, DO-218(AB) , MINI-MELF, MELF, TO-92, TO-126, TO-252(A), TO252-4L, TO-251, TO-262, D-PAK, TO-263, D2PAK, SOD-123(FL/T/S/H1/HT/HE), 1206(S), SOD-323(FL/T/HE), 0805, SOD-523(FL), 0603, SOD-723(FL), SOD-923(FL), SOD-882, 0402, 0201, SOT-23(-3/-3L/-3S/-5/-6/-6L), SOT-26, SOT-343, SOT-353, SOT-553, SOT-363, SOT-563, SOT-223, SOT-323(F), SOT-523(F), SOT-723(F), SOT-883, DFN1006-3L, 2928-8L, CP, SOT-143, TO-277(A), WBFBP, DFN1006-2, DFN1006-3, DFN0603, DSON10, DFN2510(-10L), DFN2010, DFN1608, DFN1610, DFN1308, DFN3810(-9L), DFN5515(-18L), DFN1515-6L, DFN1515-6L, DFN2020-6L, DFN1610-6L, DFN1713-8L, DFN2010-8L, TO-89, SOP-8, MSOP-8, TSOP-6, TSSOP-8, MSOP-10, DFN2626-10L, DFN3020-10L, DFN4120-10L, DFN3316-16, LDFN4016-16L, PPAK2X3, PPAK3X3, DFN2X2-3L, DFN3X3(-8L), DFN2X2-6, DFN2X3-6, DFN2X3-8, PPAK5X6, DFN5X6-8L)	/

Test Report

Report No. A2230273068101025

Page 6 of 26

CTI Sample ID	Sample Name(s)	Used for	Reference Report No. - CTI Sample ID
006	Halogen-Free Epoxy Molding Compound	DIODE & BRIDGE RECTIFIERS(R-1, A-405(H), DO-41, DO-15, R-3, DO-201AD, R-6, R-7, MT09E, MT09ES, FT, GBP, GBL, GBU, GBJ, KBL, KBP, KBU, KBJ, JA, JB, 2S, D3K, TSB-5, S25VB10, SKBPC, 2CL, CL, MD-M, MD-S, MD-F, DB-1, DB-S, DF, DF-S, LBF, ABS, MSBS, YBS, YBSL, SBS, SBSL, LDF, MBF(S/T1/T2), UMB-F, MSBL, TTF, WOM/RC-2, MKBPC, MKBPC-W, KBPC-1, KBPC-6, KBPC-8, KBPC, KBPC-W, MP, MP8, MBR, MBR-W, BR, BR-W, BR-L, BR-6, BR-8, RA/RAS, CXA, TO-220AC, TO-220AB, ITO-220AC, ITO-220AB, TO-3P, TO-247(A/AD/S), SMA-X, DO-214AC/SMA, SMA-F, SMA-L, SMA-S, SMA-HE, SMA-T, DO-214AA/SMB, SMB-F, SMB-S, SMB-L, DO-214AB/SMC, SMC-F, SMC-T3, SMC-T4, SMC-HE, DO-218(AB) , MINI-MELF, MELF, TO-92, TO-126, TO-252(A), TO252-4L, TO-251, TO-262, D-PAK, TO-263, D2PAK, SOD-123(FL/T/S/H1/HT/HE), 1206(S), SOD-323(FL/T/HE), 0805, SOD-523(FL), 0603, SOD-723(FL), SOD-923(FL), SOD-882, 0402, 0201, SOT-23(-3/-3L/-3S/-5/-6/-6L), SOT-26, SOT-343, SOT-353, SOT-553, SOT-363, SOT-563, SOT-223, SOT-323(F), SOT-523(F), SOT-723(F), SOT-883, DFN1006-3L, 2928-8L, CP, SOT-143, TO-277(A), WBFBP, DFN1006-2, DFN1006-3, DFN0603, DSON10, DFN2510(-10L), DFN2010, DFN1608, DFN1610, DFN1308, DFN3810(-9L), DFN5515(-18L), DFN1515-6L, DFN1515-6L, DFN2020-6L, DFN1610-6L, DFN1713-8L, DFN2010-8L, TO-89, SOP-8, MSOP-8, TSOP-6, TSSOP-8, MSOP-10, DFN2626-10L, DFN3020-10L, DFN4120-10L, DFN3316-16, LDFN4016-16L, PPAK2X3, PPAK3X3, DFN2X2-3L, DFN3X3(-8L), DFN2X2-6, DFN2X3-6, DFN2X3-8, PPAK5X6, DFN5X6-8L)	/

Test Report

Report No. A2230273068101025

Page 7 of 26

CTI Sample ID	Sample Name(s)	Used for	Reference Report No. - CTI Sample ID
007	Silicone	DIODE & BRIDGE RECTIFIERS(R-1, A-405(H), DO-41, DO-15, R-3, DO-201AD, R-6, R-7, MT09E, MT09ES, FT, GBP, GBL, GBU, GBJ, KBL, KBP, KBU, KBJ, JA, JB, 2S, D3K, TSB-5, S25VB10, SKBPC, 2CL, CL, MD-M, MD-S, MD-F, DB-1, DB-S, DF, DF-S, LBF, ABS, MSBS, YBS, YBSL, SBS, SBSL, LDF, MBF(S/T1/T2), UMB-F, MSBL, TTF, WOM/RC-2, MKBPC, MKBPC-W, KBPC-1, KBPC-6, KBPC-8, KBPC, KBPC-W, MP, MP8, MBR, MBR-W, BR, BR-W, BR-L, BR-6, BR-8, RA/RAS, CXA, TO-220AC, TO-220AB, ITO-220AC, ITO-220AB, TO-3P, TO-247(A/AD/S), SMA-X, DO-214AC/SMA, SMA-F, SMA-L, SMA-S, SMA-HE, SMA-T, DO-214AA/SMB, SMB-F, SMB-S, SMB-L, DO-214AB/SMC, SMC-F, SMC-T3, SMC-T4, SMC-HE, DO-218(AB) , MINI-MELF, MELF, TO-92, TO-126, TO-252(A), TO252-4L, TO-251, TO-262, D-PAK, TO-263, D2PAK, SOD-123(FL/T/S/H1/HT/HE), 1206(S), SOD-323(FL/T/HE), 0805, SOD-523(FL), 0603, SOD-723(FL), SOD-923(FL), SOD-882, 0402, 0201, SOT-23(-3/-3L/-3S/-5/-6/-6L), SOT-26, SOT-343, SOT-353, SOT-553, SOT-363, SOT-563, SOT-223, SOT-323(F), SOT-523(F), SOT-723(F), SOT-883, DFN1006-3L, 2928-8L, CP, SOT-143, TO-277(A), WBFBP, DFN1006-2, DFN1006-3, DFN0603, DSON10, DFN2510(-10L), DFN2010, DFN1608, DFN1610, DFN1308, DFN3810(-9L), DFN5515(-18L), DFN1515-6L, DFN1515-6L, DFN2020-6L, DFN1610-6L, DFN1713-8L, DFN2010-8L, TO-89, SOP-8, MSOP-8, TSOP-6, TSSOP-8, MSOP-10, DFN2626-10L, DFN3020-10L, DFN4120-10L, DFN3316-16, LDFN4016-16L, PPAK2X3, PPAK3X3, DFN2X2-3L, DFN3X3(-8L), DFN2X2-6, DFN2X3-6, DFN2X3-8, PPAK5X6, DFN5X6-8L)	/

Test Report

Report No. A2230273068101025

Page 8 of 26

CTI Sample ID	Sample Name(s)	Used for	Reference Report No. - CTI Sample ID
008	Solder	DIODE & BRIDGE RECTIFIERS(R-1, A-405(H), DO-41, DO-15, R-3, DO-201AD, R-6, R-7, MT09E, MT09ES, FT, GBP, GBL, GBU, GBJ, KBL, KBP, KBU, KBJ, JA, JB, 2S, D3K, TSB-5, S25VB10, SKBPC, 2CL, CL, MD-M, MD-S, MD-F, DB-1, DB-S, DF, DF-S, LBF, ABS, MSBS, YBS, YBSL, SBS, SBSL, LDF, MBF(S/T1/T2), UMB-F, MSBL, TTF, WOM/RC-2, MKBPC, MKBPC-W, KBPC-1, KBPC-6, KBPC-8, KBPC, KBPC-W, MP, MP8, MBR, MBR-W, BR, BR-W, BR-L, BR-6, BR-8, RA/RAS, CXA, TO-220AC, TO-220AB, ITO-220AC, ITO-220AB, TO-3P, TO-247(A/AD/S), SMA-X, DO-214AC/SMA, SMA-F, SMA-L, SMA-S, SMA-HE, SMA-T, DO-214AA/SMB, SMB-F, SMB-S, SMB-L, DO-214AB/SMC, SMC-F, SMC-T3, SMC-T4, SMC-HE, DO-218(AB) , MINI-MELF, MELF, TO-92, TO-126, TO-252(A), TO252-4L, TO-251, TO-262, D-PAK, TO-263, D2PAK, SOD-123(FL/T/S/H1/HT/HE), 1206(S), SOD-323(FL/T/HE), 0805, SOD-523(FL), 0603, SOD-723(FL), SOD-923(FL), SOD-882, 0402, 0201, SOT-23(-3/-3L/-3S/-5/-6/-6L), SOT-26, SOT-343, SOT-353, SOT-553, SOT-363, SOT-563, SOT-223, SOT-323(F), SOT-523(F), SOT-723(F), SOT-883, DFN1006-3L, 2928-8L, CP, SOT-143, TO-277(A), WBFBP, DFN1006-2, DFN1006-3, DFN0603, DSON10, DFN2510(-10L), DFN2010, DFN1608, DFN1610, DFN1308, DFN3810(-9L), DFN5515(-18L), DFN1515-6L, DFN1515-6L, DFN2020-6L, DFN1610-6L, DFN1713-8L, DFN2010-8L, TO-89, SOP-8, MSOP-8, TSOP-6, TSSOP-8, MSOP-10, DFN2626-10L, DFN3020-10L, DFN4120-10L, DFN3316-16, LDFN4016-16L, PPAK2X3, PPAK3X3, DFN2X2-3L, DFN3X3(-8L), DFN2X2-6, DFN2X3-6, DFN2X3-8, PPAK5X6, DFN5X6-8L)	/

Test Report

Report No. A2230273068101025

Page 9 of 26

CTI Sample ID	Sample Name(s)	Used for	Reference Report No. - CTI Sample ID
009	Pure Tin	DIODE & BRIDGE RECTIFIERS(R-1, A-405(H), DO-41, DO-15, R-3, DO-201AD, R-6, R-7, MT09E, MT09ES, FT, GBP, GBL, GBU, GBJ, KBL, KBP, KBU, KBJ, JA, JB, 2S, D3K, TSB-5, S25VB10, SKBPC, 2CL, CL, MD-M, MD-S, MD-F, DB-1, DB-S, DF, DF-S, LBF, ABS, MSBS, YBS, YBSL, SBS, SBSL, LDF, MBF(S/T1/T2), UMB-F, MSBL, TTF, WOM/RC-2, MKBPC, MKBPC-W, KBPC-1, KBPC-6, KBPC-8, KBPC, KBPC-W, MP, MP8, MBR, MBR-W, BR, BR-W, BR-L, BR-6, BR-8, RA/RAS, CXA, TO-220AC, TO-220AB, ITO-220AC, ITO-220AB, TO-3P, TO-247(A/AD/S), SMA-X, DO-214AC/SMA, SMA-F, SMA-L, SMA-S, SMA-HE, SMA-T, DO-214AA/SMB, SMB-F, SMB-S, SMB-L, DO-214AB/SMC, SMC-F, SMC-T3, SMC-T4, SMC-HE, DO-218(AB) , MINI-MELF, MELF, TO-92, TO-126, TO-252(A), TO252-4L, TO-251, TO-262, D-PAK, TO-263, D2PAK, SOD-123(FL/T/S/H1/HT/HE), 1206(S), SOD-323(FL/T/HE), 0805, SOD-523(FL), 0603, SOD-723(FL), SOD-923(FL), SOD-882, 0402, 0201, SOT-23(-3/-3L/-3S/-5/-6/-6L), SOT-26, SOT-343, SOT-353, SOT-553, SOT-363, SOT-563, SOT-223, SOT-323(F), SOT-523(F), SOT-723(F), SOT-883, DFN1006-3L, 2928-8L, CP, SOT-143, TO-277(A), WBFBP, DFN1006-2, DFN1006-3, DFN0603, DSON10, DFN2510(-10L), DFN2010, DFN1608, DFN1610, DFN1308, DFN3810(-9L), DFN5515(-18L), DFN1515-6L, DFN1515-6L, DFN2020-6L, DFN1610-6L, DFN1713-8L, DFN2010-8L, TO-89, SOP-8, MSOP-8, TSOP-6, TSSOP-8, MSOP-10, DFN2626-10L, DFN3020-10L, DFN4120-10L, DFN3316-16, LDFN4016-16L, PPAK2X3, PPAK3X3, DFN2X2-3L, DFN3X3(-8L), DFN2X2-6, DFN2X3-6, DFN2X3-8, PPAK5X6, DFN5X6-8L)	/

Remark:

The samples with the reference information in the table above are non-tested in this report. According to the client's statement, test results and the photos of the " CTI Sample ID " column reference to "Reference Report Number - CTI Sample ID " column.

Test Report

Report No. A2230273068101025

Page 10 of 26

Test Method

Tested Item(s)	Test Method	Measured Equipment(s)
Lead (Pb)	IEC 62321-5:2013	ICP-OES
Cadmium (Cd)	IEC 62321-5:2013	ICP-OES
Mercury (Hg)	IEC 62321-4:2013+AMD1:2017 CSV	ICP-OES
Hexavalent Chromium (Cr(VI))	IEC 62321-7-1:2015	UV-Vis
	IEC 62321-7-2:2017	
Polybrominated Biphenyls (PBBs)	IEC 62321-6:2015	GC-MS
Polybrominated Diphenyl Ethers (PBDEs)	IEC 62321-6:2015	GC-MS
Phthalates (DBP, BBP, DEHP, DIBP)	IEC 62321-8:2017	GC-MS
Beryllium(Be)	Refer to US EPA 3052:1996 & US EPA 6010D:2018*	ICP-OES
Antimony(Sb)	Refer to US EPA 3050B:1996 & US EPA 6010D:2018*	ICP-OES
	Refer to US EPA 3052:1996 & US EPA 6010D:2018*	
Phosphorus(P)	Refer to US EPA 3052:1996 & US EPA 6010D:2018*	ICP-OES
Hexabromocyclododecane (HBCDD)	IEC 62321-9:2021	GC-MS
Fluorine (F)	Refer to EN 14582:2016	IC
Chlorine (Cl)	Refer to EN 14582:2016	IC
Bromine (Br)	Refer to EN 14582:2016	IC
Iodine (I)	Refer to EN 14582:2016	IC
Middle Chain Chlorinated Paraffins (MCCPs)	ISO 18219:2015*	GC-MS(NCI)
Perfluorooctane Sulfonates(PFOS)	Refer to CEN/TS 15968:2010*	LC-MS-MS/LC-MS
Perfluorooctanoic Acid(PFOA)	Refer to CEN/TS 15968:2010*	LC-MS-MS/LC-MS
Phthalates	IEC 62321-8:2017	GC-MS

Test Result(s)

Tested Item(s)	Result			MDL	Limit
	001	002	003		
Lead (Pb)	N.D.	42862 mg/kg* ¹	N.D.	2 mg/kg	1000 mg/kg
Cadmium (Cd)	N.D.	N.D.	N.D.	2 mg/kg	100 mg/kg
Mercury (Hg)	N.D.	N.D.	N.D.	2 mg/kg	1000 mg/kg
Hexavalent Chromium (Cr(VI))	N.D.	N.D.	--	8 mg/kg	1000 mg/kg
	--	--	N.D.▼	0.10 µg/cm ² (LOQ)	1000 mg/kg

Test Report

Report No. A2230273068101025

Page 11 of 26

Tested Item(s)	Result			MDL	Limit
	004	005	006		
Lead (Pb)	N.D.	N.D.	N.D.	2 mg/kg	1000 mg/kg
Cadmium (Cd)	N.D.	N.D.	N.D.	2 mg/kg	100 mg/kg
Mercury (Hg)	N.D.	N.D.	N.D.	2 mg/kg	1000 mg/kg
Hexavalent Chromium (Cr(VI))	--	N.D.	N.D.	8 mg/kg	1000 mg/kg
	N.D.▼	--	--	0.10 µg/cm ² (LOQ)	1000 mg/kg

Tested Item(s)	Result			MDL	Limit
	007	008	009		
Lead (Pb)	N.D.	930162 mg/kg*2	37 mg/kg	2 mg/kg	1000 mg/kg
Cadmium (Cd)	N.D.	N.D.	N.D.	2 mg/kg	100 mg/kg
Mercury (Hg)	N.D.	N.D.	N.D.	2 mg/kg	1000 mg/kg
Hexavalent Chromium (Cr(VI))	N.D.	--	--	8 mg/kg	1000 mg/kg
	--	N.D.▼	N.D.▼	0.10 µg/cm ² (LOQ)	1000 mg/kg

Tested Item(s)	Result			MDL	Limit
	003	004	008		
Polybrominated Biphenyls (PBBs)					
Monobromobiphenyl	N.D.	N.D.	N.D.	5 mg/kg	1000 mg/kg
Dibromobiphenyl	N.D.	N.D.	N.D.	5 mg/kg	
Tribromobiphenyl	N.D.	N.D.	N.D.	5 mg/kg	
Tetrabromobiphenyl	N.D.	N.D.	N.D.	5 mg/kg	
Pentabromobiphenyl	N.D.	N.D.	N.D.	5 mg/kg	
Hexabromobiphenyl	N.D.	N.D.	N.D.	5 mg/kg	
Heptabromobiphenyl	N.D.	N.D.	N.D.	5 mg/kg	
Octabromobiphenyl	N.D.	N.D.	N.D.	5 mg/kg	
Nonabromobiphenyl	N.D.	N.D.	N.D.	5 mg/kg	
Decabromobiphenyl	N.D.	N.D.	N.D.	5 mg/kg	

Test Report

Report No. A2230273068101025

Page 12 of 26

Tested Item(s)	Result		MDL	Limit
	009			
Polybrominated Biphenyls (PBBs)				
Monobromobiphenyl	N.D.		5 mg/kg	1000 mg/kg
Dibromobiphenyl	N.D.		5 mg/kg	
Tribromobiphenyl	N.D.		5 mg/kg	
Tetrabromobiphenyl	N.D.		5 mg/kg	
Pentabromobiphenyl	N.D.		5 mg/kg	
Hexabromobiphenyl	N.D.		5 mg/kg	
Heptabromobiphenyl	N.D.		5 mg/kg	
Octabromobiphenyl	N.D.		5 mg/kg	
Nonabromobiphenyl	N.D.		5 mg/kg	
Decabromobiphenyl	N.D.		5 mg/kg	

Tested Item(s)	Result			MDL	Limit
	003	004	008		
Polybrominated Diphenyl Ethers (PBDEs)					
Monobromodiphenyl ether	N.D.	N.D.	N.D.	5 mg/kg	1000 mg/kg
Dibromodiphenyl ether	N.D.	N.D.	N.D.	5 mg/kg	
Tribromodiphenyl ether	N.D.	N.D.	N.D.	5 mg/kg	
Tetrabromodiphenyl ether	N.D.	N.D.	N.D.	5 mg/kg	
Pentabromodiphenyl ether	N.D.	N.D.	N.D.	5 mg/kg	
Hexabromodiphenyl ether	N.D.	N.D.	N.D.	5 mg/kg	
Heptabromodiphenyl ether	N.D.	N.D.	N.D.	5 mg/kg	
Octabromodiphenyl ether	N.D.	N.D.	N.D.	5 mg/kg	
Nonabromodiphenyl ether	N.D.	N.D.	N.D.	5 mg/kg	
Decabromodiphenyl ether	N.D.	N.D.	N.D.	5 mg/kg	

Test Report

Report No. A2230273068101025

Page 13 of 26

Tested Item(s)	Result		MDL	Limit
	009			
Polybrominated Diphenyl Ethers (PBDEs)				
Monobromodiphenyl ether	N.D.		5 mg/kg	1000 mg/kg
Dibromodiphenyl ether	N.D.		5 mg/kg	
Tribromodiphenyl ether	N.D.		5 mg/kg	
Tetrabromodiphenyl ether	N.D.		5 mg/kg	
Pentabromodiphenyl ether	N.D.		5 mg/kg	
Hexabromodiphenyl ether	N.D.		5 mg/kg	
Heptabromodiphenyl ether	N.D.		5 mg/kg	
Octabromodiphenyl ether	N.D.		5 mg/kg	
Nonabromodiphenyl ether	N.D.		5 mg/kg	
Decabromodiphenyl ether	N.D.		5 mg/kg	

Tested Item(s)	Result			MDL	Limit
	003	004	008		
Phthalates (DBP, BBP, DEHP, DIBP)					
Dibutyl phthalate (DBP) CAS#:84-74-2	N.D.	N.D.	N.D.	50 mg/kg	1000 mg/kg
Butyl benzyl phthalate (BBP) CAS#:85-68-7	N.D.	N.D.	N.D.	50 mg/kg	1000 mg/kg
Di-(2-ethylhexyl) phthalate (DEHP) CAS#:117-81-7	N.D.	N.D.	N.D.	50 mg/kg	1000 mg/kg
Diisobutyl phthalate (DIBP) CAS#:84-69-5	N.D.	N.D.	N.D.	50 mg/kg	1000 mg/kg

Test Report

Report No. A2230273068101025

Page 14 of 26

Tested Item(s)	Result		MDL	Limit
	009			
Phthalates (DBP, BBP, DEHP, DIBP)				
Dibutyl phthalate (DBP) CAS#:84-74-2	N.D.		50 mg/kg	1000 mg/kg
Butyl benzyl phthalate (BBP) CAS#:85-68-7	N.D.		50 mg/kg	1000 mg/kg
Di-(2-ethylhexyl) phthalate (DEHP) CAS#:117-81-7	N.D.		50 mg/kg	1000 mg/kg
Diisobutyl phthalate (DIBP) CAS#:84-69-5	N.D.		50 mg/kg	1000 mg/kg

Tested Item(s)	Result			MDL	Limit
	001	002	005		
Polybrominated Biphenyls (PBBs)					
Monobromobiphenyl	N.D.	N.D.	N.D.	5 mg/kg	1000 mg/kg
Dibromobiphenyl	N.D.	N.D.	N.D.	5 mg/kg	
Tribromobiphenyl	N.D.	N.D.	N.D.	5 mg/kg	
Tetrabromobiphenyl	N.D.	N.D.	N.D.	5 mg/kg	
Pentabromobiphenyl	N.D.	N.D.	N.D.	5 mg/kg	
Hexabromobiphenyl	N.D.	N.D.	N.D.	5 mg/kg	
Heptabromobiphenyl	N.D.	N.D.	N.D.	5 mg/kg	
Octabromobiphenyl	N.D.	N.D.	N.D.	5 mg/kg	
Nonabromobiphenyl	N.D.	N.D.	N.D.	5 mg/kg	
Decabromobiphenyl	N.D.	N.D.	N.D.	5 mg/kg	

Test Report

Report No. A2230273068101025

Page 15 of 26

Tested Item(s)	Result		MDL	Limit
	006	007		
Polybrominated Biphenyls (PBBs)				
Monobromobiphenyl	N.D.	N.D.	5 mg/kg	1000 mg/kg
Dibromobiphenyl	N.D.	N.D.	5 mg/kg	
Tribromobiphenyl	N.D.	N.D.	5 mg/kg	
Tetrabromobiphenyl	N.D.	N.D.	5 mg/kg	
Pentabromobiphenyl	N.D.	N.D.	5 mg/kg	
Hexabromobiphenyl	N.D.	N.D.	5 mg/kg	
Heptabromobiphenyl	N.D.	N.D.	5 mg/kg	
Octabromobiphenyl	N.D.	N.D.	5 mg/kg	
Nonabromobiphenyl	N.D.	N.D.	5 mg/kg	
Decabromobiphenyl	N.D.	N.D.	5 mg/kg	

Tested Item(s)	Result			MDL	Limit
	001	002	005		
Polybrominated Diphenyl Ethers (PBDEs)					
Monobromodiphenyl ether	N.D.	N.D.	N.D.	5 mg/kg	1000 mg/kg
Dibromodiphenyl ether	N.D.	N.D.	N.D.	5 mg/kg	
Tribromodiphenyl ether	N.D.	N.D.	N.D.	5 mg/kg	
Tetrabromodiphenyl ether	N.D.	N.D.	N.D.	5 mg/kg	
Pentabromodiphenyl ether	N.D.	N.D.	N.D.	5 mg/kg	
Hexabromodiphenyl ether	N.D.	N.D.	N.D.	5 mg/kg	
Heptabromodiphenyl ether	N.D.	N.D.	N.D.	5 mg/kg	
Octabromodiphenyl ether	N.D.	N.D.	N.D.	5 mg/kg	
Nonabromodiphenyl ether	N.D.	N.D.	N.D.	5 mg/kg	
Decabromodiphenyl ether	N.D.	N.D.	N.D.	5 mg/kg	

Test Report

Report No. A2230273068101025

Page 16 of 26

Tested Item(s)	Result		MDL	Limit
	006	007		
Polybrominated Diphenyl Ethers (PBDEs)				
Monobromodiphenyl ether	N.D.	N.D.	5 mg/kg	1000 mg/kg
Dibromodiphenyl ether	N.D.	N.D.	5 mg/kg	
Tribromodiphenyl ether	N.D.	N.D.	5 mg/kg	
Tetrabromodiphenyl ether	N.D.	N.D.	5 mg/kg	
Pentabromodiphenyl ether	N.D.	N.D.	5 mg/kg	
Hexabromodiphenyl ether	N.D.	N.D.	5 mg/kg	
Heptabromodiphenyl ether	N.D.	N.D.	5 mg/kg	
Octabromodiphenyl ether	N.D.	N.D.	5 mg/kg	
Nonabromodiphenyl ether	N.D.	N.D.	5 mg/kg	
Decabromodiphenyl ether	N.D.	N.D.	5 mg/kg	

Tested Item(s)	Result			MDL	Limit
	001	002	005		
Phthalates (DBP, BBP, DEHP, DIBP)					
Dibutyl phthalate (DBP) CAS#:84-74-2	N.D.	N.D.	N.D.	50 mg/kg	1000 mg/kg
Butyl benzyl phthalate (BBP) CAS#:85-68-7	N.D.	N.D.	N.D.	50 mg/kg	1000 mg/kg
Di-(2-ethylhexyl) phthalate (DEHP) CAS#:117-81-7	N.D.	N.D.	N.D.	50 mg/kg	1000 mg/kg
Diisobutyl phthalate (DIBP) CAS#:84-69-5	N.D.	N.D.	N.D.	50 mg/kg	1000 mg/kg

Test Report

Report No. A2230273068101025

Page 17 of 26

Tested Item(s)	Result		MDL	Limit
	006	007		
Phthalates (DBP, BBP, DEHP, DIBP)				
Dibutyl phthalate (DBP) CAS#:84-74-2	N.D.	N.D.	50 mg/kg	1000 mg/kg
Butyl benzyl phthalate (BBP) CAS#:85-68-7	N.D.	N.D.	50 mg/kg	1000 mg/kg
Di-(2-ethylhexyl) phthalate (DEHP) CAS#:117-81-7	N.D.	N.D.	50 mg/kg	1000 mg/kg
Diisobutyl phthalate (DIBP) CAS#:84-69-5	N.D.	N.D.	50 mg/kg	1000 mg/kg

Tested Item(s)	Result		MDL
	005	006	
Beryllium (Be)	N.D.	N.D.	10 mg/kg

Tested Item(s)	Result			MDL
	001	002	005	
Antimony (Sb)	N.D.	N.D.	3477 mg/kg	10 mg/kg

Tested Item(s)	Result		MDL
	006	007	
Antimony (Sb)	N.D.	N.D.	10 mg/kg

Tested Item(s)	Result			MDL
	003	004	008	
Antimony (Sb)	N.D.	N.D.	N.D.	10 mg/kg

Tested Item(s)	Result	MDL
	009	
Antimony (Sb)	N.D.	10 mg/kg

Test Report

Report No. A2230273068101025

Page 18 of 26

Tested Item(s)	Result		MDL
	005	006	
Phosphorus (P)	N.D.	N.D.	50 mg/kg

Tested Item(s)	Result			MDL
	001	002	005	
Hexabromocyclododecane (HBCDD)	N.D.	N.D.	N.D.	20 mg/kg

Tested Item(s)	Result	MDL
	006	
Hexabromocyclododecane (HBCDD)	N.D.	20 mg/kg

Tested Item(s)	Result			MDL
	001	002	005	
Fluorine (F)	N.D.	N.D.	N.D.	10 mg/kg
Chlorine (Cl)	N.D.	N.D.	176 mg/kg	10 mg/kg
Bromine (Br)	N.D.	N.D.	3497 mg/kg	10 mg/kg
Iodine (I)	N.D.	N.D.	N.D.	10 mg/kg

Tested Item(s)	Result	MDL
	006	
Fluorine (F)	N.D.	10 mg/kg
Chlorine (Cl)	131 mg/kg	10 mg/kg
Bromine (Br)	N.D.	10 mg/kg
Iodine (I)	N.D.	10 mg/kg

Tested Item(s)	Result			MDL
	001	002	003	
Middle Chain Chlorinated Paraffins (MCCPs)	N.D.	N.D.	N.D.	100 mg/kg

Test Report

Report No. A2230273068101025

Page 19 of 26

Tested Item(s)	Result			MDL
	004	005	006	
Middle Chain Chlorinated Paraffins (MCCPs)	N.D.	N.D.	N.D.	100 mg/kg

Tested Item(s)	Result			MDL
	007	008	009	
Middle Chain Chlorinated Paraffins (MCCPs)	N.D.	N.D.	N.D.	100 mg/kg

Tested Item(s)	Result			MDL
	001	002	005	
Perfluorooctane Sulfonates (PFOS)	N.D.	N.D.	N.D.	0.010 mg/kg

Tested Item(s)	Result		MDL
	006	009	
Perfluorooctane Sulfonates (PFOS)	N.D.	N.D.	0.010 mg/kg

Tested Item(s)	Result			MDL
	001	002	005	
Perfluorooctanoic Acid (PFOA)	N.D.	N.D.	N.D.	0.010 mg/kg

Tested Item(s)	Result		MDL
	006	009	
Perfluorooctanoic Acid (PFOA)	N.D.	N.D.	0.010 mg/kg

Test Report

Report No. A2230273068101025

Page 20 of 26

Tested Item(s)	Result			MDL
	001	002	003	
Phthalates				
*Di-n-hexyl phthalate (DNHP/DHEXP) CAS#:84-75-3	N.D.	N.D.	N.D.	50 mg/kg
Di-n-octyl phthalate (DNOP) CAS#:117-84-0	N.D.	N.D.	N.D.	50 mg/kg
Di-isononyl phthalate (DINP) CAS#:28553-12-0,68515-48-0	N.D.	N.D.	N.D.	50 mg/kg
Di-iso-decyl phthalate (DIDP) CAS#:26761-40-0,68515-49-1	N.D.	N.D.	N.D.	50 mg/kg

Tested Item(s)	Result			MDL
	004	005	006	
Phthalates				
*Di-n-hexyl phthalate (DNHP/DHEXP) CAS#:84-75-3	N.D.	N.D.	N.D.	50 mg/kg
Di-n-octyl phthalate (DNOP) CAS#:117-84-0	N.D.	N.D.	N.D.	50 mg/kg
Di-isononyl phthalate (DINP) CAS#:28553-12-0,68515-48-0	N.D.	N.D.	N.D.	50 mg/kg
Di-iso-decyl phthalate (DIDP) CAS#:26761-40-0,68515-49-1	N.D.	N.D.	N.D.	50 mg/kg

Tested Item(s)	Result			MDL
	007	008	009	
Phthalates				
*Di-n-hexyl phthalate (DNHP/DHEXP) CAS#:84-75-3	N.D.	N.D.	N.D.	50 mg/kg
Di-n-octyl phthalate (DNOP) CAS#:117-84-0	N.D.	N.D.	N.D.	50 mg/kg
Di-isononyl phthalate (DINP) CAS#:28553-12-0,68515-48-0	N.D.	N.D.	N.D.	50 mg/kg
Di-iso-decyl phthalate (DIDP) CAS#:26761-40-0,68515-49-1	N.D.	N.D.	N.D.	50 mg/kg

Test Report

Report No. A2230273068101025

Page 21 of 26

Sample/Part Description

No.	CTI Sample ID	Description
1	001	Chip
2	002	Chip
3	003	Cupreous metal wire
4	004	Cupreous metal
5	005	Dark grey solid
6	006	Dark grey solid
7	007	White solid
8	008	Silvery metal
9	009	Silvery metal

Remark: The sample(s) had been dissolved totally tested for Lead, Cadmium, Mercury, Beryllium, Antimony, Phosphorus.

-MDL = Method Detection Limit

-N.D. = Not Detected (<MDL or LOQ)

-mg/kg = ppm = parts per million

-1000 mg/kg = 0.1%

-LOQ = Limit of Quantification, The LOQ of Hexavalent chromium is 0.10 $\mu\text{g}/\text{cm}^2$

-▼The sample is negative for Cr(VI) – The Cr(VI) concentration is below 0.10 $\mu\text{g}/\text{cm}^2$. The coating is considered a non-Cr(VI) based coating.

-*¹=According to the client's statement, the material of the sample(s) fall into exemption items 7(c)-I according to EU Directive 2011/65/EU: Electrical and electronic components containing lead in a glass or ceramic other than dielectric ceramic in capacitors, e.g. piezoelectronic devices, or in a glass or ceramic matrix compound.

-*²=According to the client's statement, the material of the sample(s) fall into exemption items 7(a) according to EU Directive 2011/65/EU: Lead in high melting temperature type solders (i.e. lead-based alloys containing 85 % by weight or more lead).

Note: “*” indicates the item(s)/method(s) is (are) not in CNAS accreditation scope.

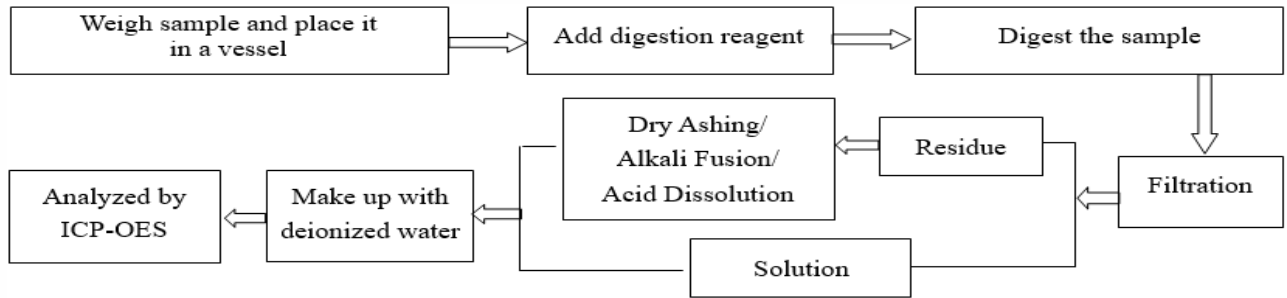
Test Report

Report No. A2230273068101025

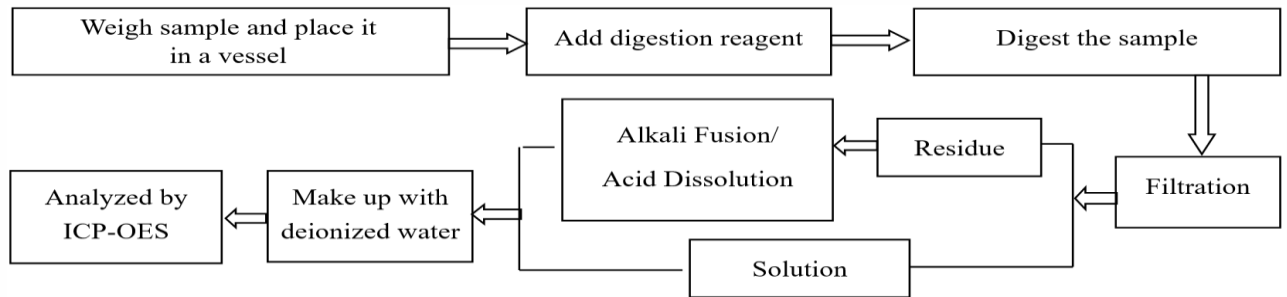
Page 22 of 26

Test Process

1. Lead (Pb), Cadmium (Cd)

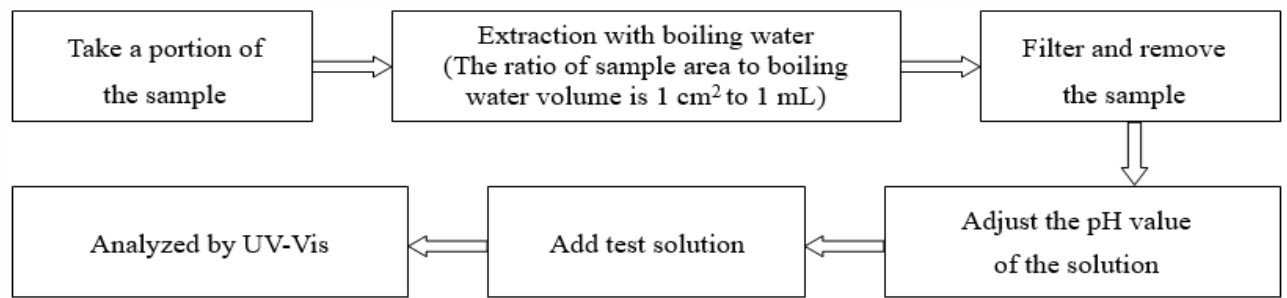


2. Mercury (Hg)

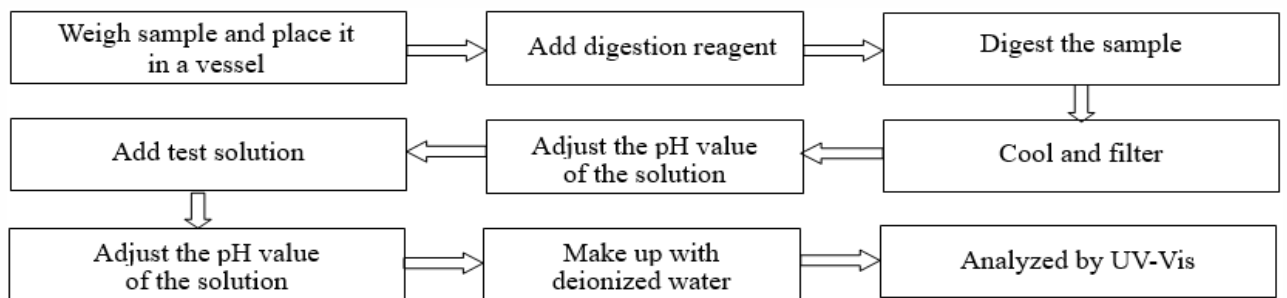


3. Hexavalent Chromium (Cr(VI))

(1) IEC 62321-7-1:2015



(2) IEC 62321-7-2:2017

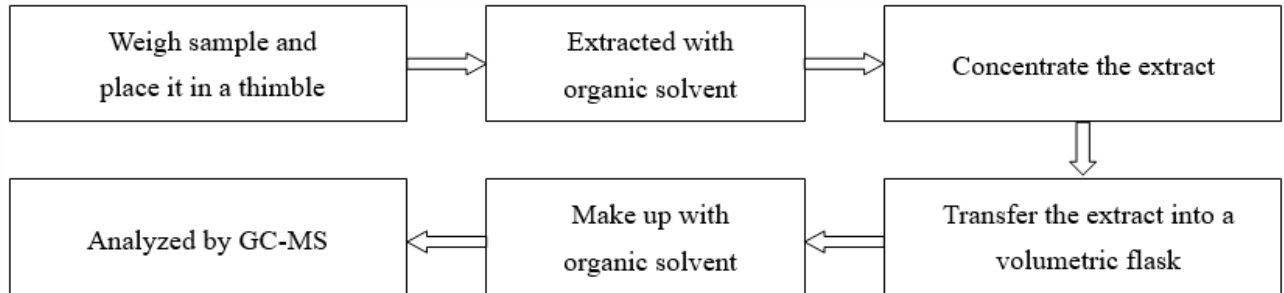


Test Report

Report No. A2230273068101025

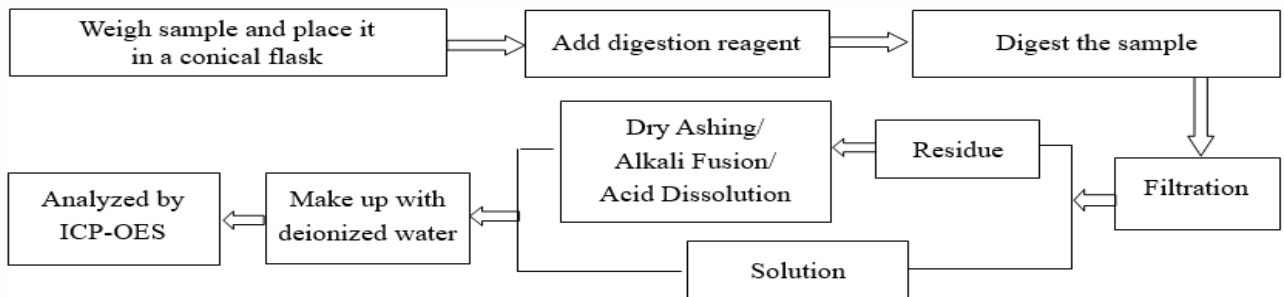
Page 23 of 26

4. Polybrominated Biphenyls (PBBs), Polybrominated Diphenyl Ethers (PBDEs)



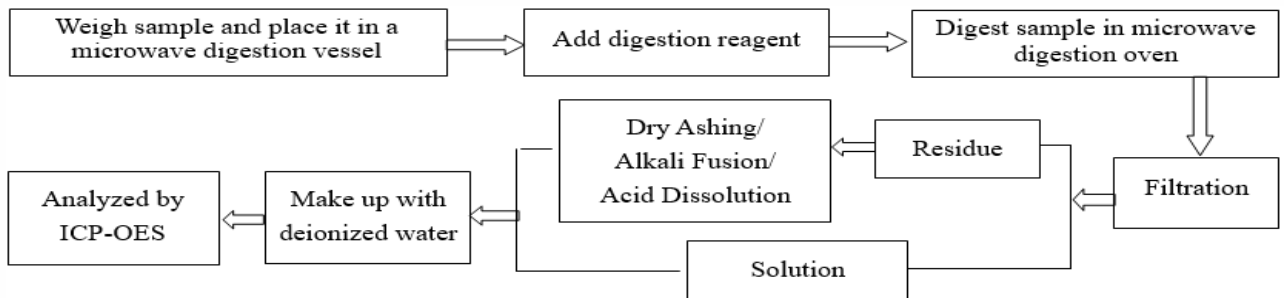
5. Antimony(Sb)

Refer to US EPA 3050B:1996 & US EPA 6010D:2018

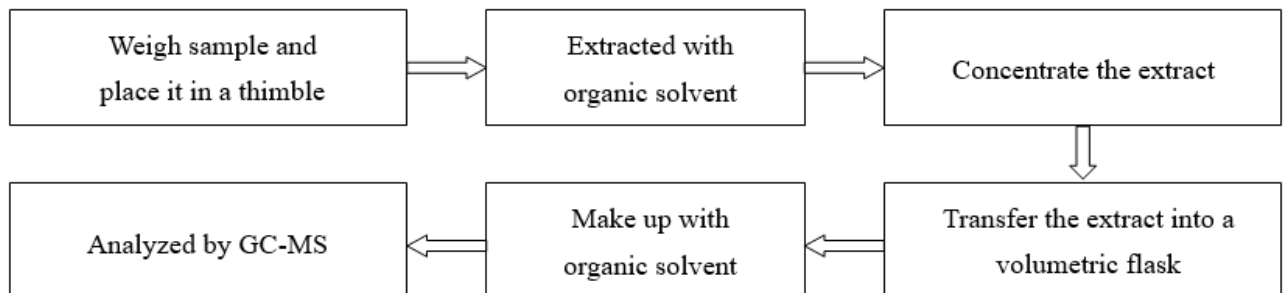


6. Beryllium(Be), Antimony(Sb), Phosphorus(P)

Refer to US EPA 3052:1996 & US EPA 6010D:2018



7. Hexabromocyclododecane (HBCDD)

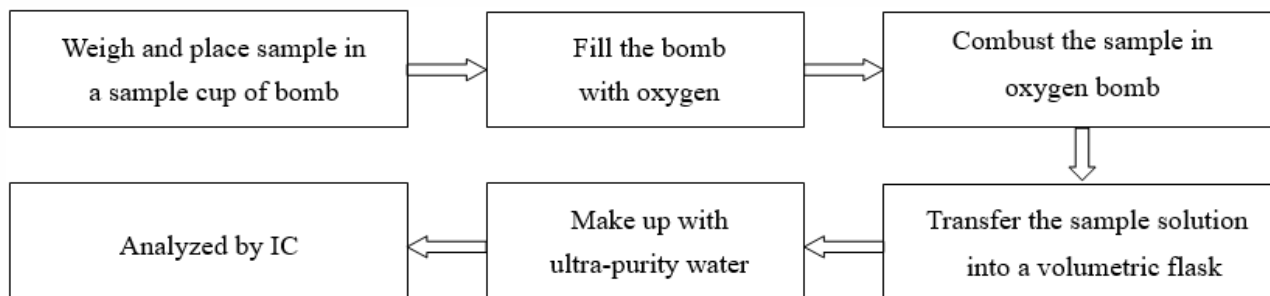


Test Report

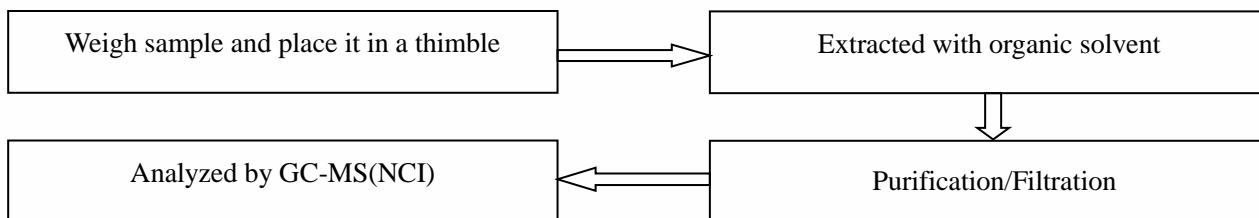
Report No. A2230273068101025

Page 24 of 26

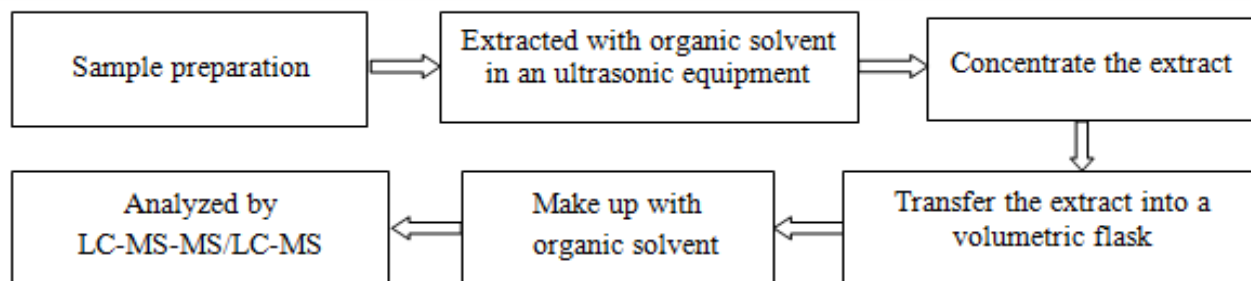
8. Fluorine (F), Chlorine (Cl), Bromine (Br), Iodine (I)



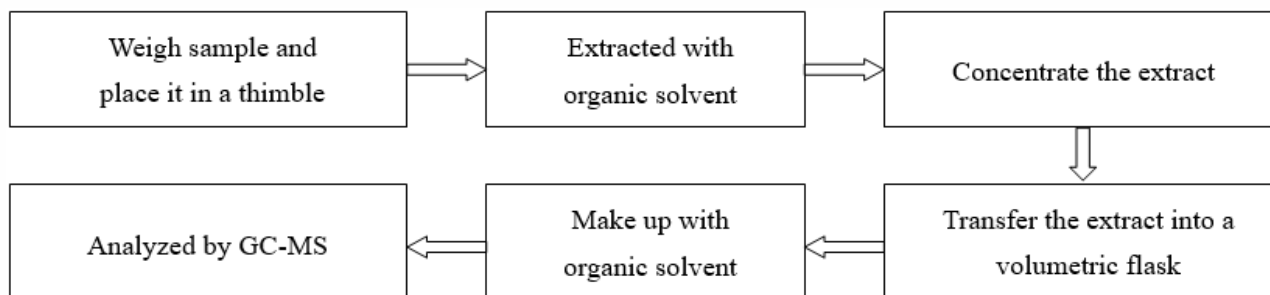
9. Middle Chain Chlorinated Paraffins (MCCPs)



10. Perfluorooctane Sulfonates(PFOS), Perfluorooctanoic Acid(PFOA)



11. Phthalates

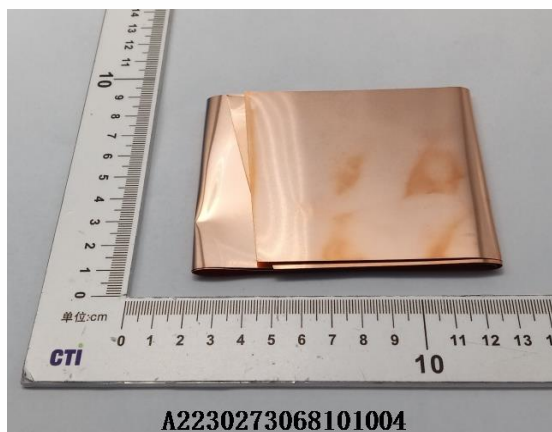


Test Report

Report No. A2230273068101025

Page 25 of 26

Photo(s) of the sample(s)



Test Report

Report No. A2230273068101025

Page 26 of 26



Statement:

1. This report is considered invalid without approved signature, special seal and the seal on the perforation;
2. The Company Name shown on Report and Address, the sample(s) and sample information was/were provided by the applicant who should be responsible for the authenticity which CTI hasn't verified;
3. The result(s) shown in this report refer(s) only to the sample(s) tested;
4. Without written approval of CTI, this report can't be reproduced except in full;
5. In case of any discrepancy between the English version and Chinese version of the testing reports (if generated), the Chinese version shall prevail.

*** End of Report ***