



# RS1AW THRU RS1MW

## SURFACE MOUNT FAST RECOVERY RECTIFIER

**REVERSE VOLTAGE:** 50 to 1000 VOLTS

**FORWARD CURRENT:** 1.0 AMPERE

### FEATURES

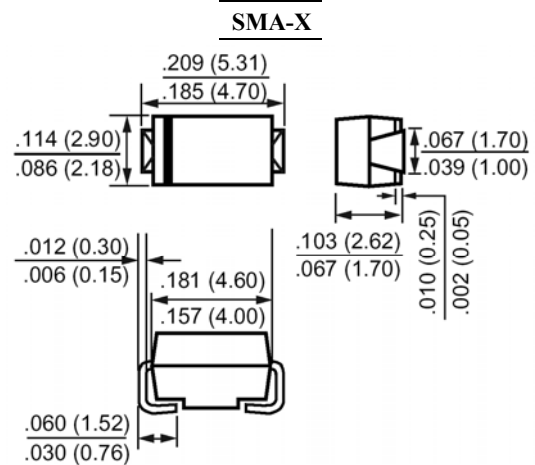
- Plastic package has Underwriters Laboratory Flammability Classification 94V-O
- For surface mounted applications
- Low profile package
- Easy pick and place
- Built-in strain relief
- Fast Recovery times for high efficiency
- Suffix " H " indicated Halogen-free part, ex.RS1AWH

### MECHANICAL DATA

Case : Molded plastic, SMA-X

Terminals : Solder plated, solderable per MIL-STD-750, method 2026 guaranteed

Polarity : Color band denotes cathode end



Dimensions in inches and (millimeters)

### Maximum Ratings and Electrical Characteristics

Ratings at 25°C ambient temperature unless otherwise specified.

Single phase, half wave, 60Hz, resistive or inductive load.

For capacitive load, derate current by 20%.

Parameter	Symbols	RS1AW	RS1BW	RS1DW	RS1GW	RS1JW	RS1KW	RS1MW	Units
Maximum Recerrent Peak Reverse Voltage	$V_{RRM}$	50	100	200	400	600	800	1000	Volts
Maximum RMS Voltage	$V_{RMS}$	35	70	140	280	420	560	700	Volts
Maximum DC Blocking Voltage	$V_{DC}$	50	100	200	400	600	800	1000	Volts
Maximum Average Forward Rectified Current at $T_J=90^\circ\text{C}$	$I_{(AV)}$	1.0							Amp
Peak Forward Surge Current, 8.3ms single half-sine-wave superimposed on rated load (JEDEC method)	$I_{FSM}$	30							Amp
Maximum Forward Voltage at 1.0A	$V_F$	1.3							Volts
Maximum Reverse Current at $T_J=25^\circ\text{C}$ at Rated DC Blocking Voltage $T_J=125^\circ\text{C}$	$I_R$					5.0			mAmp
						150			
Typical Junction Capacitance (Note 1)	$C_J$	12							pF
Typical Thermal Resistance (Note 2)	$R_{\theta JL}$	32							°C/W
Maximum Reverse Recovery Time (Note 3)	$T_{RR}$	150				250	500		nS
Operating Junction Temperature Range	$T_J$	-65 to +150							°C
Storage Temperature Range	$T_{stg}$	-65 to +150							°C

#### NOTES:

1- Measured at 1 MHz and applied reverse voltage of 4.0 VDC.

2- Thermal resistance from junction to lead mounted on P.C.B. with 0.3 x 0.3" (8.0 x 8.0mm) copper pad areas

3- Reverse Recovery Test Conditions:  $I_F=0.5A$ ,  $I_R=1A$ ,  $I_{RR}=0.25A$ .



# RS1AW THRU RS1MW

## SURFACE MOUNT FAST RECOVERY RECTIFIER

### RATINGS AND CHARACTERISTIC CURVES

#### RATING AND CHARACTERISTIC CURVES

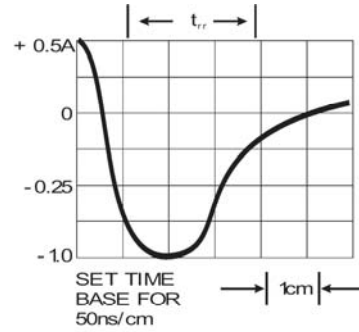
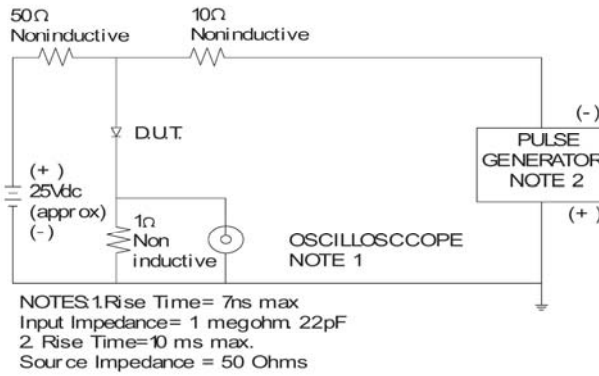


Fig. 1-REVERSE RECOVERY TIME CHARACTERISTIC AND TEST CIRCUIT DIAGRAM

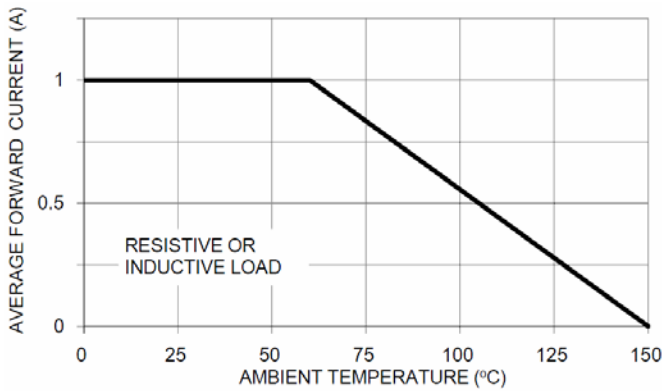


FIG. 2- MAXIMUM FORWARD CURRENT DERATING CURVE

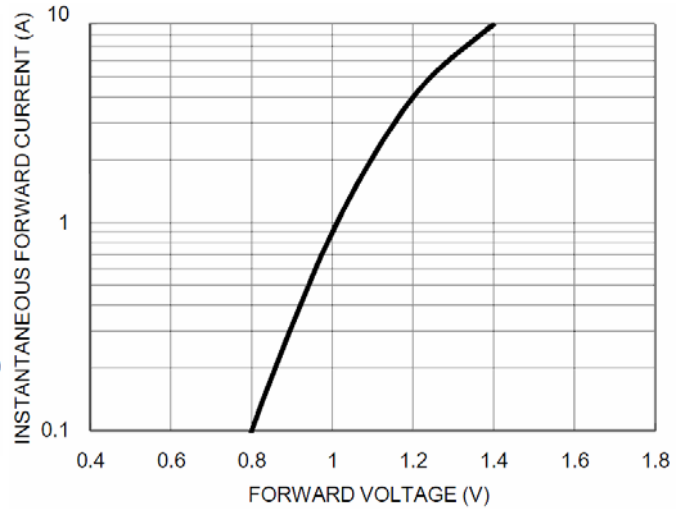


FIG. 3- TYPICAL FORWARD CHARACTERISTICS

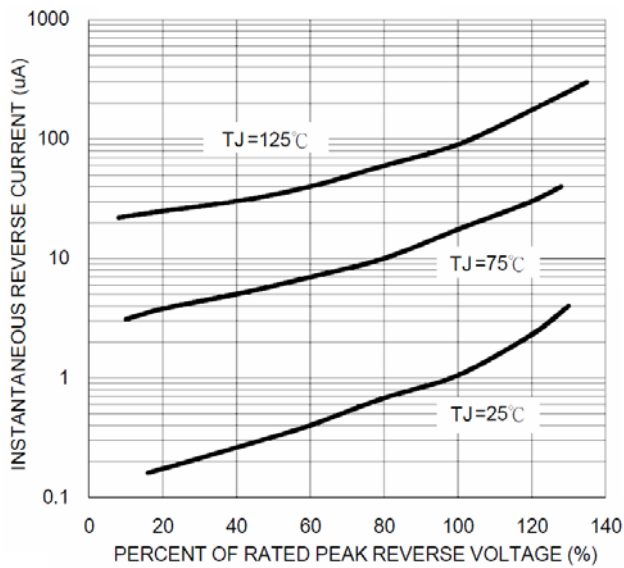


FIG. 4- TYPICAL REVERSE CHARACTERISTICS PER LEG

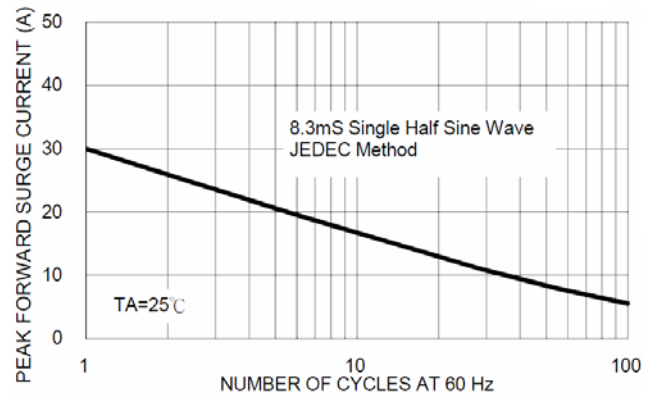


FIG. 5- MAXIMUM NON-REPETITIVE FORWARD SURGE CURRENT