

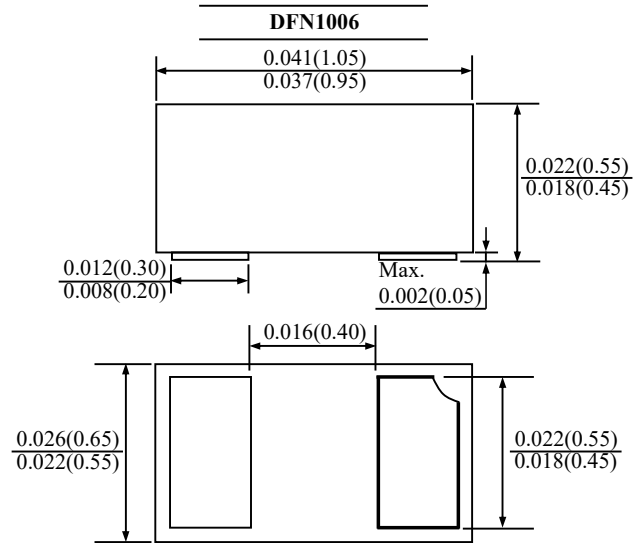
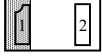


# RB520-40LPH

## SCHOTTKY DIODE

### FEATURES

- Low Forward Voltage
- Suffix "H" indicates Halogen-free parts, ex. RB520-40LPH



Dimensions in inch and (millimeter)

### Maximum Ratings@ $T_A=25\text{ }^\circ\text{C}$

Parameter	Symbol	Value	Unit
Peak Reverse Voltage	$V_{RM}$	40	V
Reverse Voltage	$V_R$	40	V
Average Rectified Forward Current	$I_{F(AV)}$	200	mA
Non-Repetitive Peak Forward Current (8.3ms)	$I_{FSM}$	1	A
Operating Junction Temperature Range	$T_J$	-40 to +125	$^\circ\text{C}$
Storage Temperature Range	$T_{STG}$	-40 to +150	$^\circ\text{C}$

### Electrical Characteristics@ $T_A=25\text{ }^\circ\text{C}$

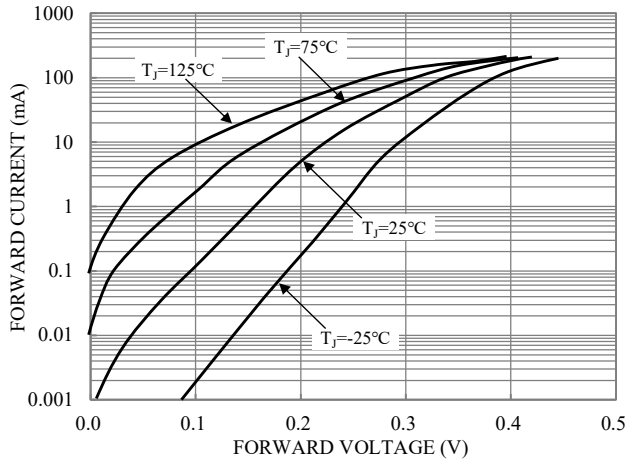
Parameter	Test Conditions	Symbol	Min.	Max.	Unit
Reverse Breakdown Voltage	$I_R=500\mu\text{A}$	$V_{(BR)R}$	40	-	V
Forward Voltage	$I_F=200\text{mA}$	$V_F$	-	0.55	V
Reverse Current	$V_R=10\text{V}$	$I_R$	-	10	$\mu\text{A}$



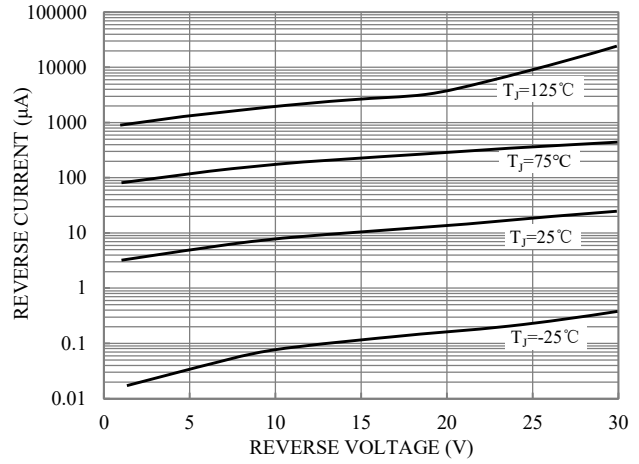
# RB520-40LPH

## SCHOTTKY DIODE

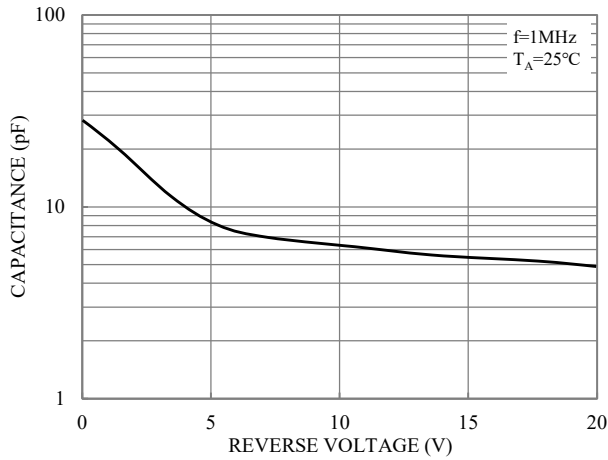
### RATINGS AND CHARACTERISTIC CURVES



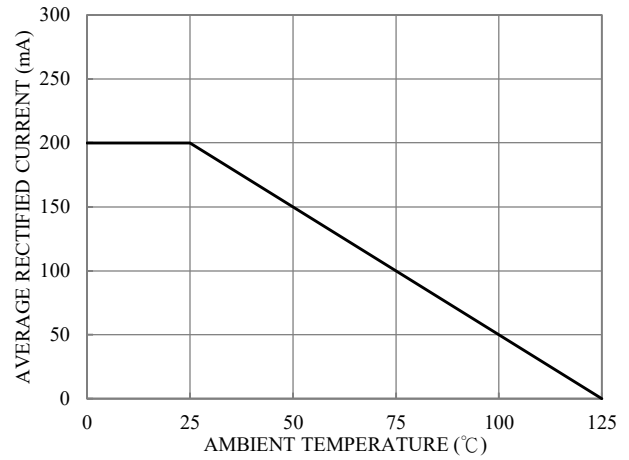
**Fig.1-TYPICAL FORWARD CHARACTERISTICS**



**Fig.2-TYPICAL REVERSE CHARACTERISTICS**



**Fig.3-TOTAL CAPACITANCE**



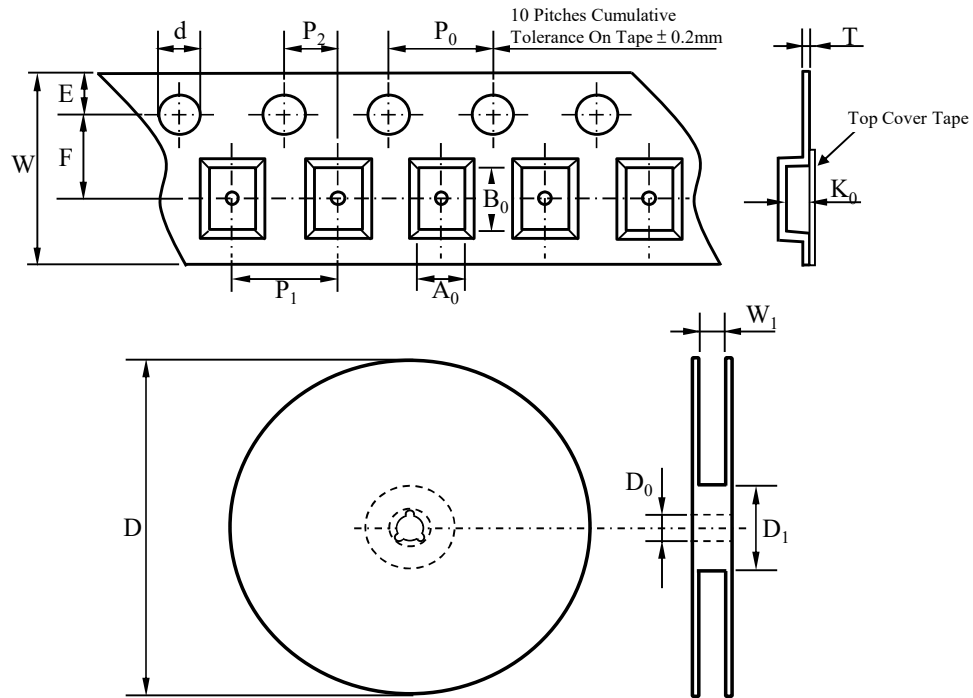
**Fig.4-AVERAGE RECTIFIED CURRENT DERATING CURVE**



# RB520-40LPH

## SCHOTTKY DIODE

### TAPE & REEL SPECIFICATION



Item	Symbol	DFN1006
Carrier width	$A_0$	*
Carrier length	$B_0$	
Carrier depth	$K_0$	
Sprocket hole	$d$	$1.50 \pm 0.10$
Reel outside diameter	$D$	$178.00 \pm 2.00$
Feed hole width	$D_0$	$13.00 \pm 0.50$
Reel inner diameter	$D_1$	MIN. 54.00
Sprocket hole position	$E$	$1.75 \pm 0.10$
Punch hole position	$F$	$3.50 \pm 0.10$
Sprocket hole pitch	$P_0$	$4.00 \pm 0.10$
Punch hole pitch	$P_1$	$2.00 \pm 0.10$
Embossment center	$P_2$	$2.00 \pm 0.10$
Overall tape thickness	$T$	MAX. 0.60
Tape width	$W$	$8.00 \pm 0.30$
Reel width	$W_1$	$8.40 \pm 1.50$

Note \*:  $A_0$ ,  $B_0$ , and  $K_0$  are determined by component size. The clearance between the components and the cavity must be within 0.05 mm min. to 0.5 mm max.

### ORDER INFORMATION

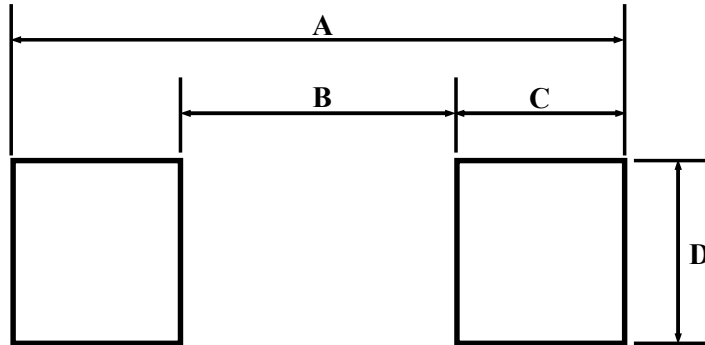
Part Number	Marking Code	Reel Size	Quantity
RB520-40LPH	X	7"	10,000



# RB520-40LPH

## SCHOTTKY DIODE

### SUGGESTED SOLDER PAD LAYOUT



Unit :mm

PACKAGE	A	B	C	D
DFN1006	1.10	0.30	0.40	0.60