



MBRD5200H

SURFACE MOUNT SCHOTTKY BARRIER RECTIFIER

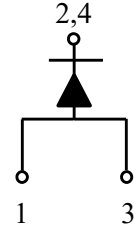
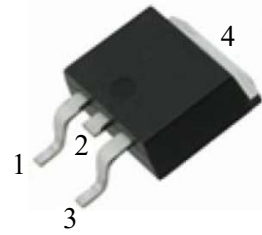
REVERSE VOLTAGE: 200 VOLTS
FORWARD CURRENT: 5 AMPERES

FEATURES

- Low forward voltage drop
- High frequency operation
- Suffix "H" indicates Halogen-free parts, ex.MBRD5200H

MECHANICAL DATA

Case : Molded plastic, TO-252



PIN
 1. ANODE
 2. CATHODE
 3. ANODE
 4. CATHODE

Maximum Ratings and Electrical Characteristics

Ratings at 25°C ambient temperature unless otherwise specified.

Single phase, half wave, 60Hz, resistive or inductive load.

For capacitive load, derate current by 20%.

Parameter	Symbols	MBRD5200H	Units
Maximum Repetitive Peak Reverse Voltage	V_{RRM}	200	Volts
Maximum RMS Voltage	V_{RMS}	140	Volts
Maximum DC Blocking Voltage	V_{DC}	200	Volts
Maximum Average Forward Rectified Current at T_L (See Fig. 1)	$I_{(AV)}$	5	Amp
Peak Forward Surge Current, 8.3ms single half-sine-wave superimposed on rated load (JEDEC method)	I_{FSM}	120.0	Amp
Maximum Forward Voltage at $I_F=5A, T_J=25^\circ C$	V_F	0.95	Volts
Maximum Reverse Current at $V_R=200V, T_A=25^\circ C$ at $V_R=200V, T_A=100^\circ C$	I_R	0.05 10.00	mAmp
Typical Thermal Resistance from Junction to Case	$R_{\theta JC}$	2.8	°C/W
Operating Junction Temperature Range	T_J	-55 to +150	°C
Storage Temperature Range	T_{stg}	-55 to +150	°C



MBRD5200H

SURFACE MOUNT SCHOTTKY BARRIER RECTIFIER

RATINGS AND CHARACTERISTIC CURVES

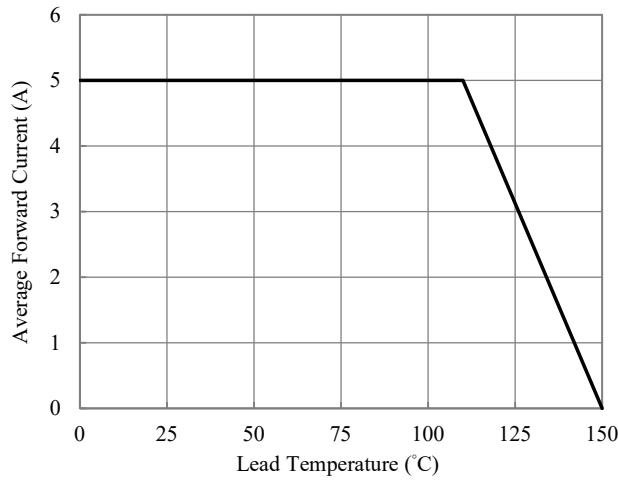


Fig.1-Forward Current Derating Curve

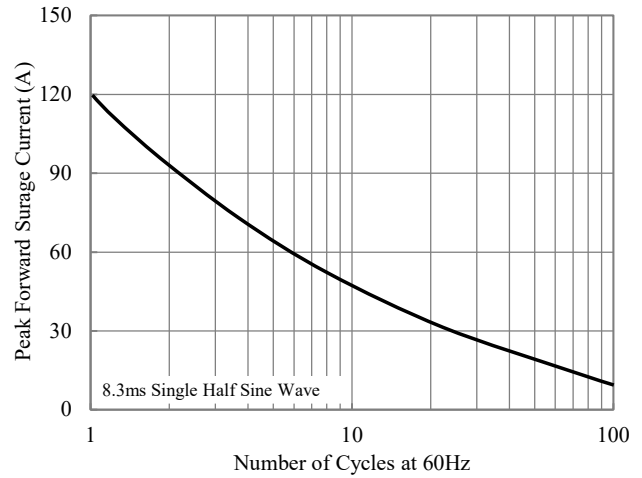


Fig. 2-Maximum Non-Repetitive Peak Forward Surge Current

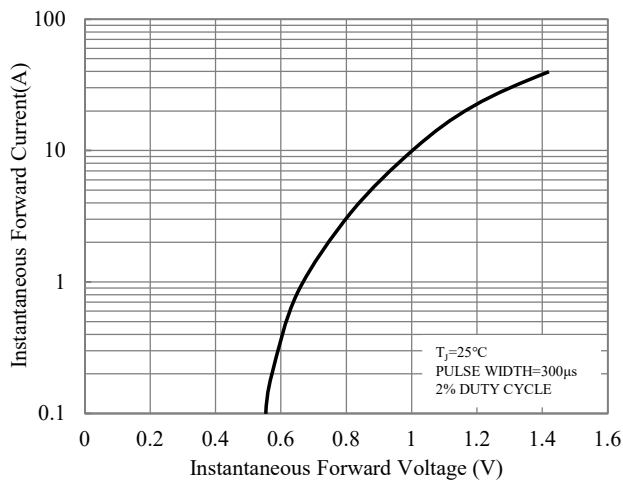


Fig.3-Typical Instantaneous Forward Characteristics

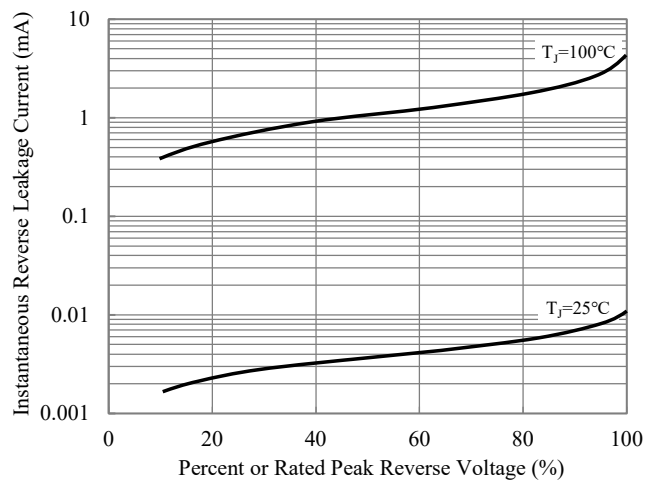


Fig.4-Typical Reverse Leakage Characteristics

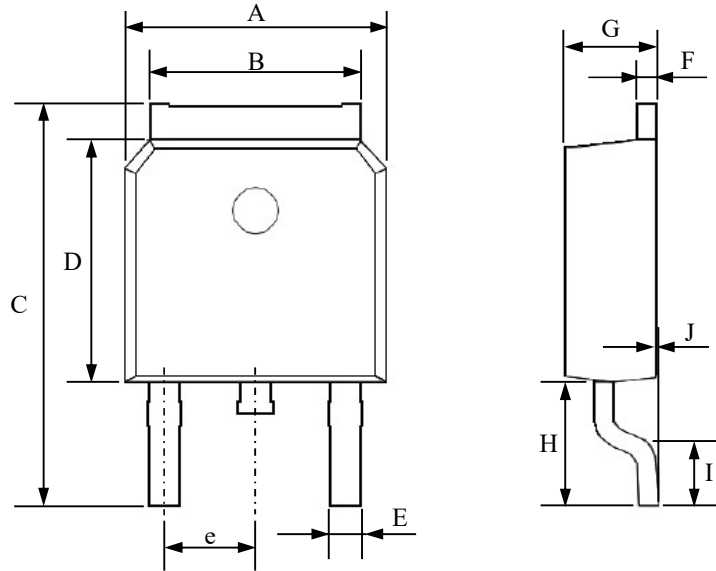


MBRD5200H

SURFACE MOUNT SCHOTTKY BARRIER RECTIFIER

PACKAGE DIMENSION

TO-252



Symbol	Millimeters	
	Min	Max
A	6.40	6.80
B	5.10	5.50
C	9.80	10.50
D	5.90	6.30
e	2.10	2.50
E	0.50	1.00
F	0.30	0.70
G	2.10	2.50
H	2.80	3.40
I	1.20	1.90
J	0.00	0.15