

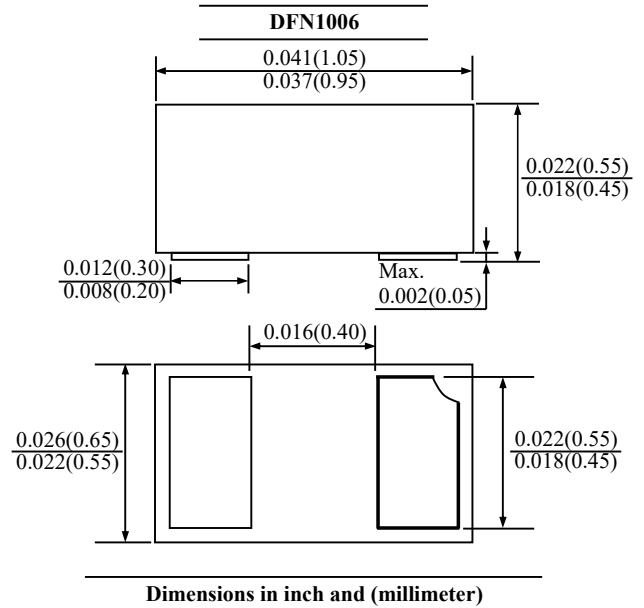
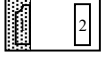


BAS70LPH

SCHOTTKY DIODES

FEATURES

- Low Forward Voltage
- Suffix "H" indicates Halogen-free parts, ex. BAS70LPH



Maximum Ratings@ $T_A=25\text{ }^\circ\text{C}$

Parameter	Symbol	Value	Unit
Reverse Voltage	V_R	70	V
Maximum Continuous Forward Current	I_F	70	mA
Peak Forward Surge Current (8.3ms)	I_{FSM}	100	mA
Thermal Resistance from Junction to Ambient (Note 1)	$R_{\theta JA}$	500	$^\circ\text{C}/\text{W}$
Operating Junction Temperature Range	T_J	-65 to +125	$^\circ\text{C}$
Storage Temperature Range	T_{STG}	-65 to +150	$^\circ\text{C}$

Note:

1. Device mounted on FR-4 PC board, 2oz copper, with 1-inch square copper plate.

Electrical Characteristics@ $T_A=25\text{ }^\circ\text{C}$

Parameter	Test Conditions	Symbol	Min.	Max.	Unit
Forward Voltage	$I_F=1\text{mA}$	V_F	-	0.41	V
	$I_F=10\text{mA}$		-	0.75	
	$I_F=15\text{mA}$		-	1.00	
Reverse Leakage Current	$V_R=50\text{V}$	I_R	-	0.1	μA
	$V_R=70\text{V}$		-	10	
Capacitance	$V_R=0\text{V}$, $f=1\text{MHz}$	C_T	-	2	pF



BAS70LPH

SCHOTTKY DIODES

RATINGS AND CHARACTERISTIC CURVES

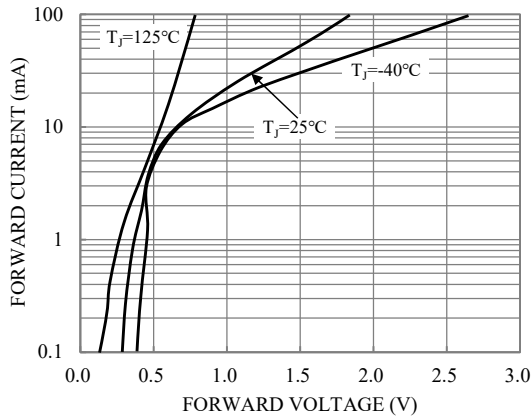


Fig.1-TYPICAL FORWARD CHARACTERISTICS

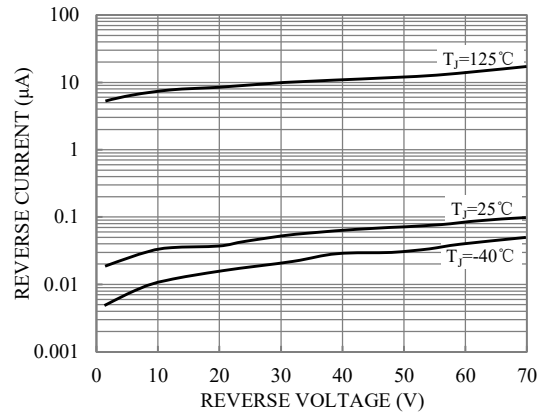


Fig.2-TYPICAL REVERSE CHARACTERISTICS

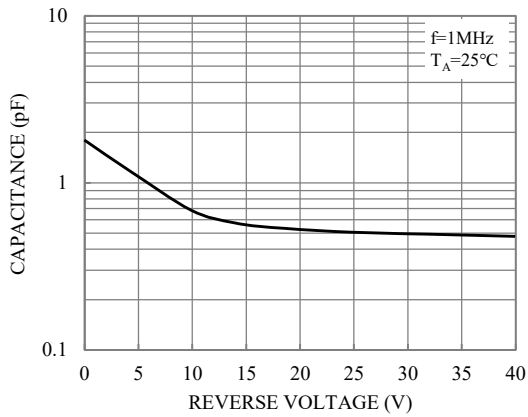


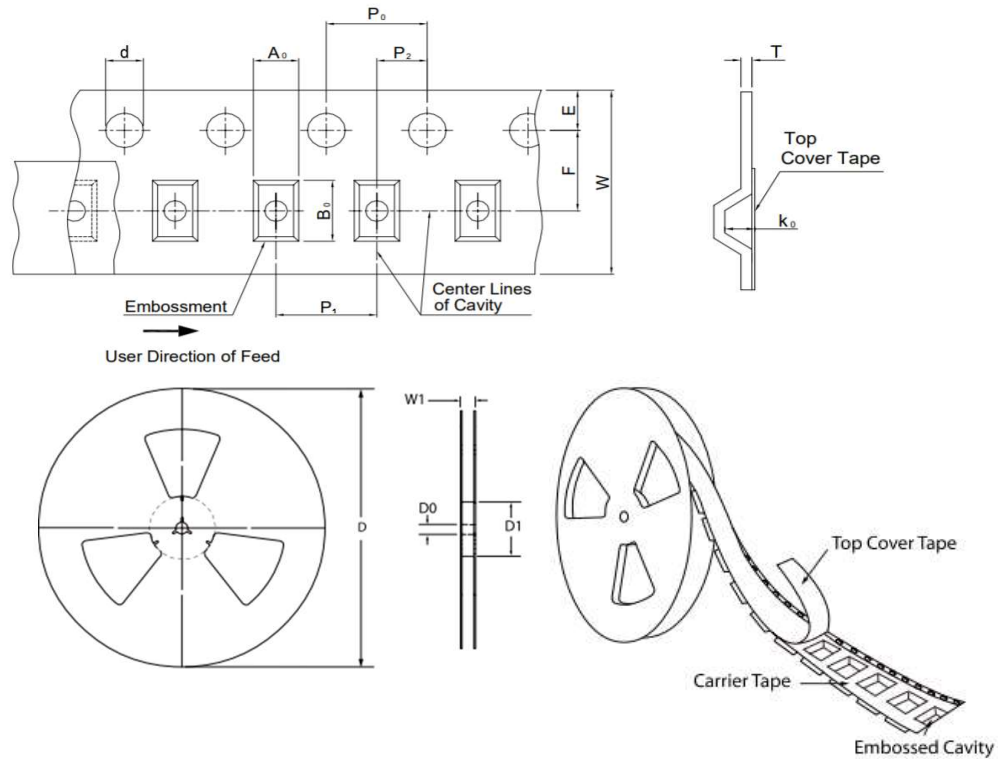
Fig.3-TOTAL CAPACITANCE



BAS70LPH

SCHOTTKY DIODES

TAPE & REEL SPECIFICATION



Item	Symbol	DFN1006
Carrier width	A_0	Note *
Carrier length	B_0	
Carrier depth	K_0	
Sprocket hole	d	1.50 ± 0.10
Reel outside diameter	D	178.00 ± 2.00
Feed hole width	D_0	13.00 ± 0.50
Reel inner diameter	D_1	MIN. 54.00
Sprocket hole position	E	1.75 ± 0.10
Punch hole position	F	3.50 ± 0.10
Sprocket hole pitch	P_0	4.00 ± 0.10
Punch hole pitch	P_1	2.00 ± 0.10
Embossment center	P_2	2.00 ± 0.10
Overall tape thickness	T	MAX. 0.60
Tape width	W	8.00 ± 0.30
Reel width	W_1	8.40 ± 1.50

Note *: A_0 , B_0 , and K_0 are determined by component size. The clearance between the components and the cavity must be within 0.05 mm min. to 0.5 mm max.

ORDER INFORMATION

Package	Reel Size	Quantity
DFN1006	7"	10,000

MARKING CODE

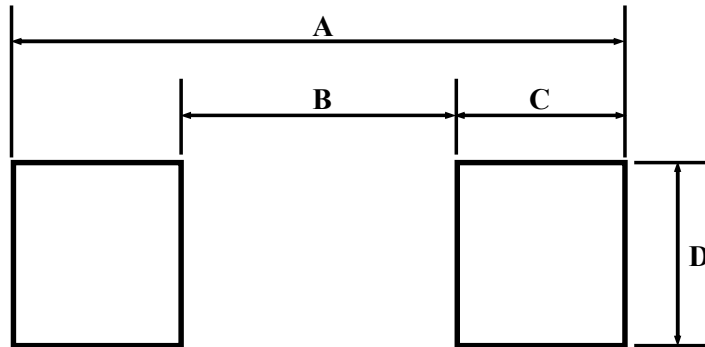
Part Number	Marking Code
BAS70LPH	G9



BAS70LPH

SCHOTTKY DIODES

SUGGESTED SOLDER PAD LAYOUT



Unit :mm

PACKAGE	A	B	C	D
DFN1006	1.10	0.30	0.40	0.60