

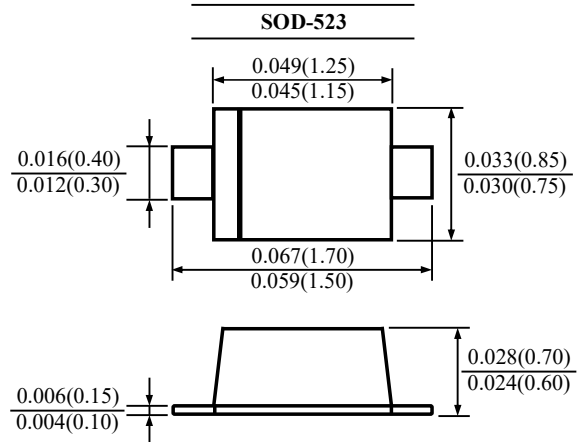


1SS400H

SWITCHING DIODE

FEATURES

- For high speed switching application
- Suffix "H" indicates Halogen-free parts, ex. 1SS400H.



Dimensions in inch and (millimeter)

Maximum Ratings ($T_A=25\text{ }^\circ\text{C}$ unless otherwise noted)

Parameter	Symbol	Value	Unit
Peak Reverse Voltage	V_{RM}	90	V
Reverse Voltage	V_R	80	V
Average Rectified Forward Current	$I_{F(AV)}$	100	mA
Maximum Peak Forward Current	I_{FM}	225	mA
Non-Repetitive Peak Forward Surge Current (at $t=1\text{s}$)	I_{FSM}	500	mA
Junction Temperature	T_J	150	$^\circ\text{C}$
Storage Temperature Range	T_{stg}	-55 to +150	$^\circ\text{C}$

Electrical Characteristics ($T_A=25\text{ }^\circ\text{C}$ unless otherwise specified)

Parameter	Conditions	Symbol	Max	Unit
Forward Voltage	$I_F=100\text{mA}$	V_F	1.2	V
Reverse Current	$V_R=80\text{V}$	I_R	0.1	μA
Capacitance Between Terminals	$V_R=0.5\text{V}$, $f=1\text{MHz}$	C_T	3.0	pF
Reverse Recovery Time	$V_R=6\text{V}$, $I_F=10\text{mA}$, $R_L=100\Omega$	t_{rr}	4.0	ns



1SS400H SWITCHING DIODE

RATINGS AND CHARACTERISTIC CURVES

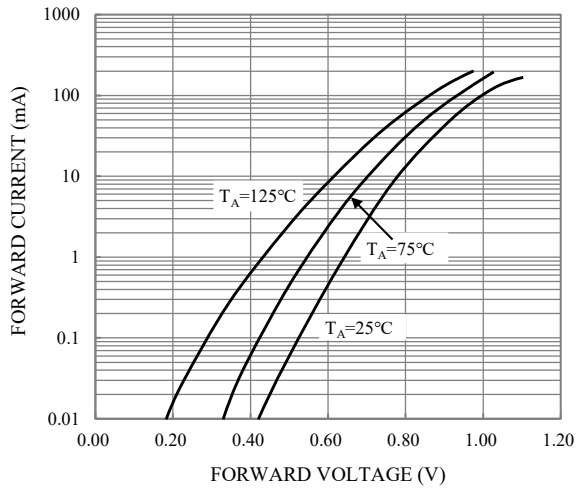


Fig.1-TYPICAL FORWARD CHARACTERISTICS

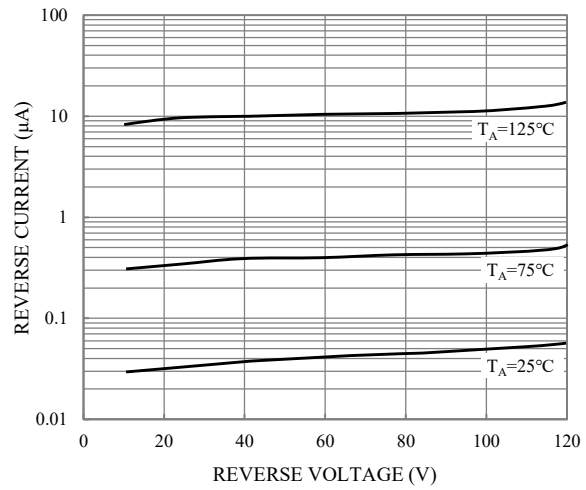


Fig.2-TYPICAL REVERSE CHARACTERISTICS

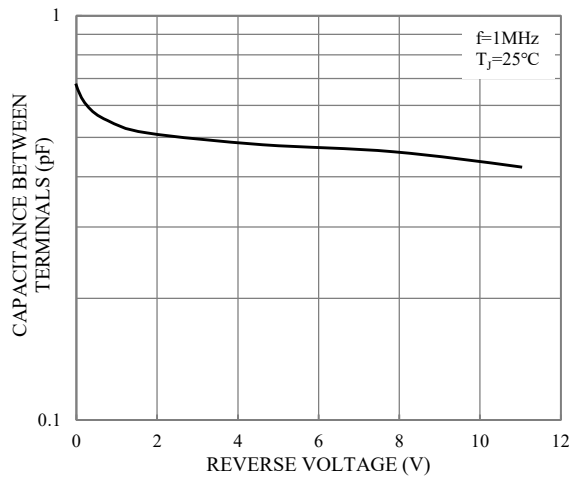


Fig.3-CAPACITANCE

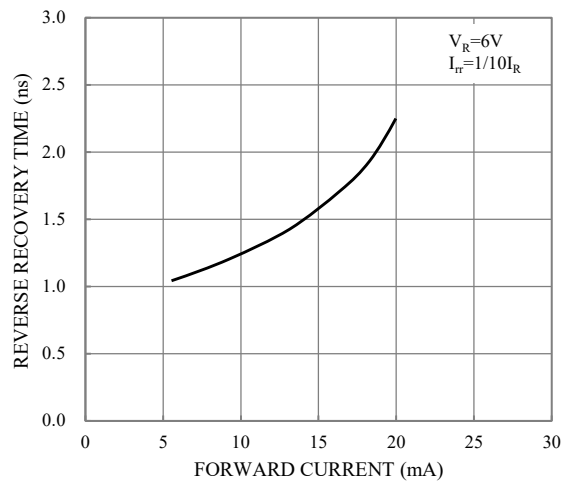


Fig.4-REVERSE RECOVERY TIME CHARACTERISTICS

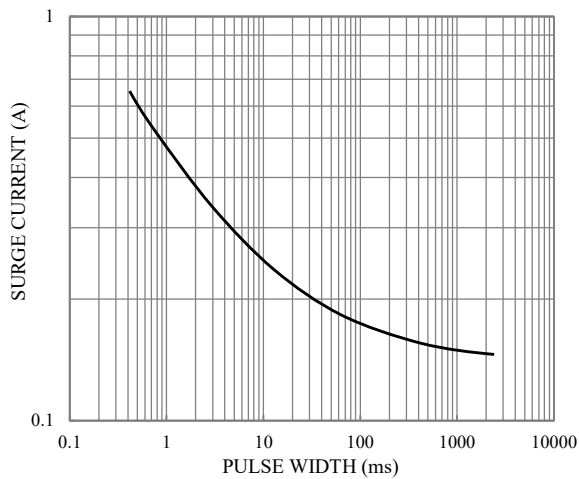
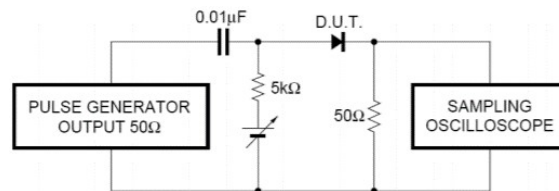


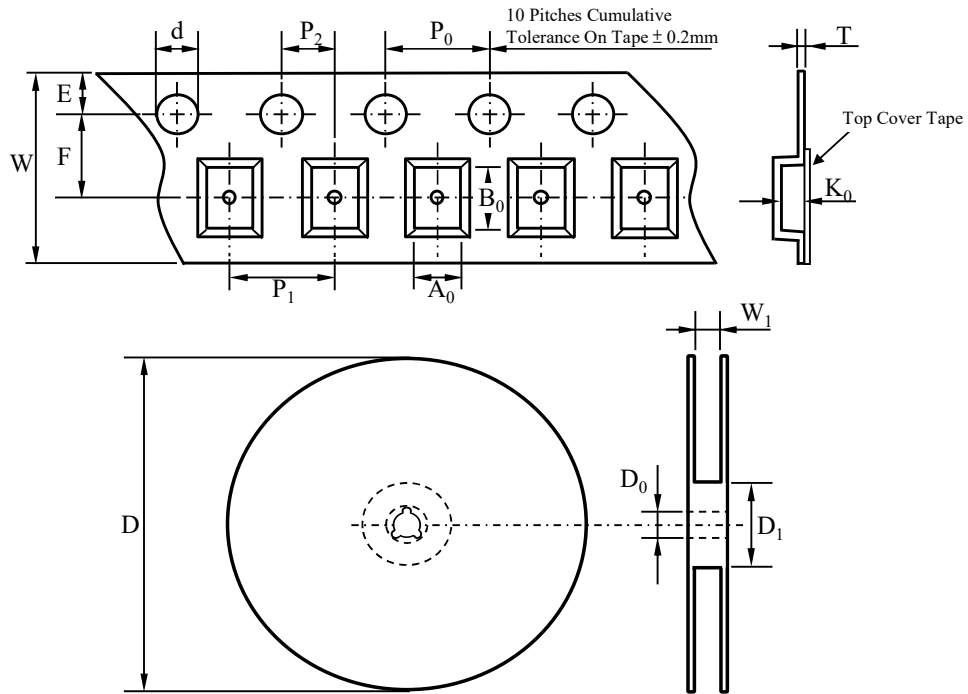
Fig.5-SURGE CURRENT CHARACTERISTICS





1SS400H SWITCHING DIODE

TAPE & REEL SPECIFICATION



Item	Symbol	SOD-523
Carrier width	A_0	*
Carrier length	B_0	
Carrier depth	K_0	
Sprocket hole	d	1.50 ± 0.10
Reel outside diameter	D	178.00 ± 2.00
Feed hole width	D_0	13.00 ± 0.50
Reel inner diameter	D_1	MIN. 50.00
Sprocket hole position	E	1.75 ± 0.10
Punch hole position	F	3.50 ± 0.10
Sprocket hole pitch	P_0	4.00 ± 0.10
Punch hole pitch	P_1	4.00 ± 0.10
Embossment center	P_2	2.00 ± 0.10
Overall tape thickness	T	MAX. 0.60
Tape width	W	MAX. 8.30
Reel width	W_1	MAX. 14.90

Note *: A_0 , B_0 , and K_0 are determined by component size. The clearance between the components and the cavity must be within 0.05 mm min. to 0.5 mm max.

ORDER INFORMATION

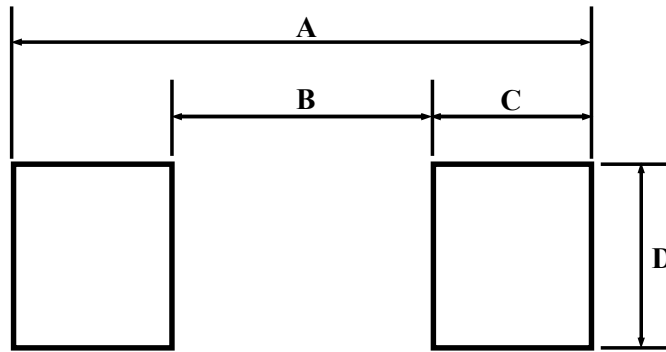
Part Number	Marking Code	Reel Size	Quantity
1SS400H	A	7"	4,000



1SS400H

SWITCHING DIODE

SUGGESTED SOLDER PAD LAYOUT



Unit :mm

PACKAGE	A	B	C	D
SOD-523	1.70	0.70	0.50	0.80